

**QUALITY  
BRAKE SYSTEMS  
AND COMPONENTS**

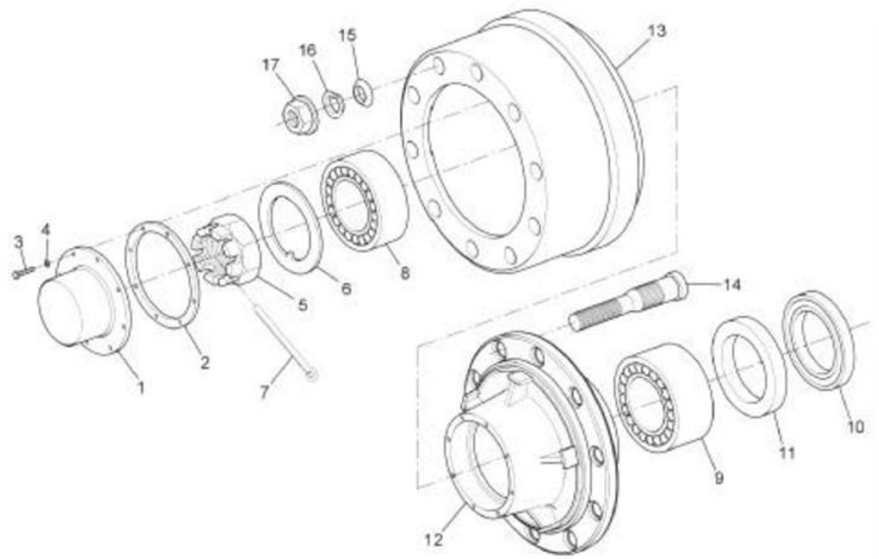


**COMPONENT  
CATALOGUE  
2019**



## propar 11000 / 15000 outboard mounted brake drums

1	Hub Cap - 8 Hole	01CP001
	Gasket	01GS001
2	Setscrew M6 x 16	01CP100
3	Spring Washer - 6 dia.	16HT210
	Axle Nut	01AN100
4	Axle Washer	01AW001B
5	Split Pin 8x140	01SP003
	Outer Bearing	
6	518445/10	01BR001
7	Inner Bearing	
8	1100 - 518554/10	01BR001
	Oil Seal - propar 11000	01OS009
	Collar - p/par 11000	01OC001
9	Hub - propar 11000	01HU001
	10 Stud - M22 for 420 Brake Std. stud centering	
10	Opt. hub centering Opt. Oil Filled	
11	Brake Drum - 420x180	01BD003B
12	10 stud - 403	



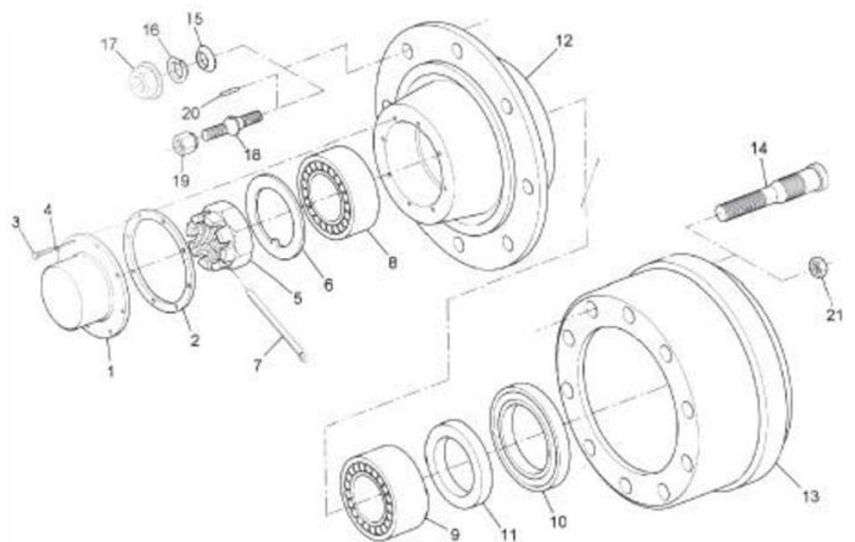
14	Wheel Stud - M22 (BM)	01BN015C
	Inner Washer - M22/M30	01WW100
15	Outer Washer - M22 Spring	01WW101
16	M30 Spherical	
	Wheel Nut - M22/M30	01WN001
	Spigot Nut	01WN105

17

18

## propar 11000 / 15000 inboard mounted brake drums

1.	Hub Cap 8 Hole	01CP001
2.	Gasket	01GS001
3.	Setscrew M6 x 16	01CP100
4.	Spring Washer 6 dia.	16HT210
5.	Axle Nut	01AN100
6.	Axle Washer	01AW001B
7.	Split Pin - 8 x 125	0101SP003
8.	Outer Bearing - 518445/410	01BR001
9.	Inner Bearing	
	Propar 11000 - 518445/410	01BR001
10.	Oil Seal - Propar 11000	01OS009
	Local Axles - Propar 15000	
11.	Collar - Propar 11000	01OC001
	Local Axle - Propar 15000	
12.	Hub - Propar 11000	01HU004B
	10 Stud M22 / 335 PCD	
	8 Stud M22 / 275 PCD	
13.	Brake Drum -	01BD003B
	420 x 180 10 Stud M22 -	
	420 x 180 10 Stud M30	
	420 x 130 10 Stud M22	
	310 x 203 8 Stud M22	
14.	Wheelstud - M22 / M30	



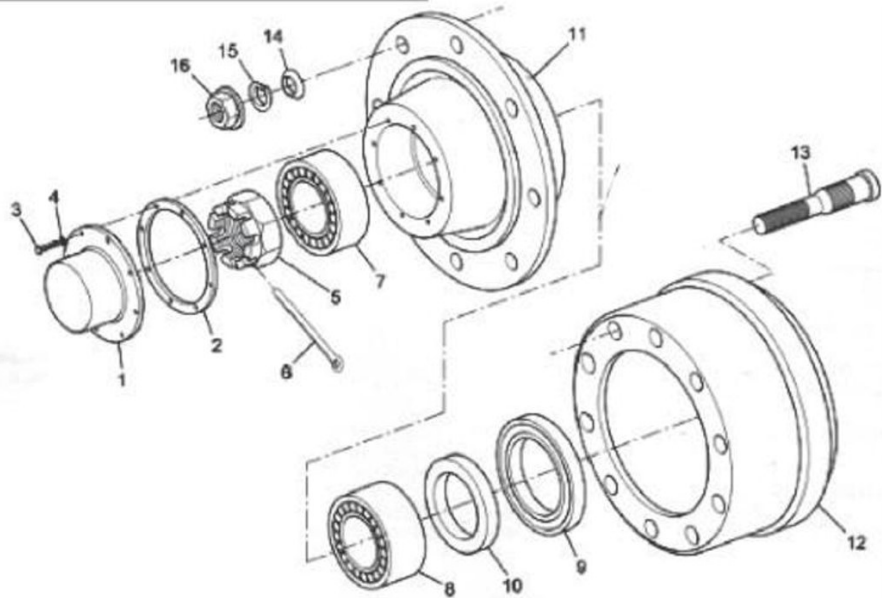
15.	Inner Washer - M22	01WW100
16.	Outer Washer - M22	
17.	Wheel Nut - M22	01WW101
18.	Spigot Nut	01WN001
		01WN105



**SW 75 sq., 92 sq., 105, 112 sq. & 127 dia.  
axle (3 5/8)**

**SQ Axle 10 Stud (Inboard  
Mounted Brake Drum)**

- |   |          |
|---|----------|
| 1. Hub cap 6-Hole                       | 01CP0161 |
| 2. Gasket                               | 01GS004  |
| 3. Setscrew M6 x 16                     | 01CP100  |
| 4. Spring Washer 6 Dia                  | 16HT210  |
| 5. Axle Nut 1.5" BSP                    | 01AN103  |
| 6. Split Pin 6 x 70                     | 01SP003  |
| 7. Outer Bearing 749/742                | 01BR025  |
| 8. Inner Bearing 749/742                | 01BR025  |
| 9. Oil Seal                             | 01OS009  |
| 10. Collar                              | 01OC054  |
| 11. Hub                                 | 01HU012  |
| 12. Brake Drum 395x150<br>10 Stud - 518 | 01BD004B |
| 13. Wheelstud M22                       | 01BN015C |
| 14. Inner Washer                        | 01WW100  |
| 15. Outer Spring Washer                 | 01WW101  |
| 16. Wheel Nut M22                       | 01WN105B |



**75 SQ & 92 Axle 8 Stud  
(Inboard Brake Drum)**

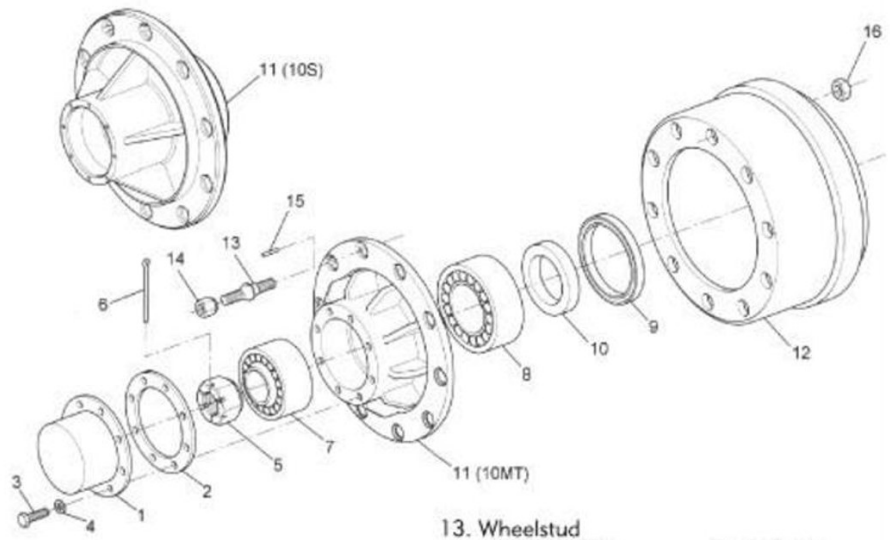
- |                                       |  |   |
|---------------------------------------|--|---|
| 1. Hub cap 6-Hole                     |  | 9. Oil Seal 92&75 sq axle                           |
| 2. Gasket                             |  | 10. Collar: 92 sq & 75 sq                           |
| 3. Setscrew M6 x 16                   |  | 11. Hub - For 92 sq & 75 sq                         |
| 4. Spring Washer 6 Dia                |  | 12. Brake Drum - 395 x 150<br>8 Stud M22 & 355 x 90 |
| 5. Axle Nut 1.25" BSP                 |  | 13. Wheelstud M22                                   |
| 6. Split Pin 6 x 70                   |  | 14. Inner Washer                                    |
| 7. O/Bearing 92&75<br>sq. axle 32214  |  | 15. Outer Spring Washer                             |
| 8. I/ Bearing 92&75<br>sq. axle 32214 |  | 16. Wheel Nut M22                                   |

**105/112 SQ & 127 Dia, Axle  
10 Stud (O/B Brake Drum)**

- |                                     |  |                                       |
|-------------------------------------|--|---------------------------------------|
| 4. Spring Washer 6 Dia              |  | 9. Oil Seal                           |
| 5. Axle Nut M88                     |  | 10. Collar                            |
| 6. Split Pin 8 x 125                |  | 11. Hub                               |
| 7. Outer Bearing -<br>HM5184445/410 |  | 12. Brake Drum - 420 x 180<br>10 Stud |
| 8. Inner Bearing -<br>HM518445/410  |  |                                       |

**HF 10mt, 10s & 8s axle**

- |   |          |
|---|----------|
| 1. Hub Cap- 10MT & 10<br>S - 6 Hole & S 4 Hole                                  | 01CP103  |
| 2. Gasket - 10MT & 10S  | 01GS005  |
| 3. Setscrew M6x16   | 01CP100  |
| 4. Spring Washer 6 Dia  | 16HT210  |
| 5. Axle Nut -<br>10MT M60x4,<br>10S M45 x3, 8S M36x3                            | 01AN102  |
| 6. Split Pin -<br>10MT & 10S 8x90<br>8S 6 x 70                                  |          |
| 7. Outer Bearing -<br>10MT<br>211749/710, 10S<br>32311<br>8S 32308              | 01BR027  |
| 8. Inner Bearing -<br>10MT 2182248/210,<br>10S 32311, 8S 32308                  | 01BR002D |
| 9. Oil Seal -<br>10MT & 10S 8S  | 01OS009  |
| 10. Oil Seal Collar -<br>10MT, 10S, 8S  | 01OC057  |
| 11. Hub - 10MT 10 Stud<br>10 MT 10 Stud York<br>10S 10 Stud<br>335mm, 225mm PCD | 01HU019  |

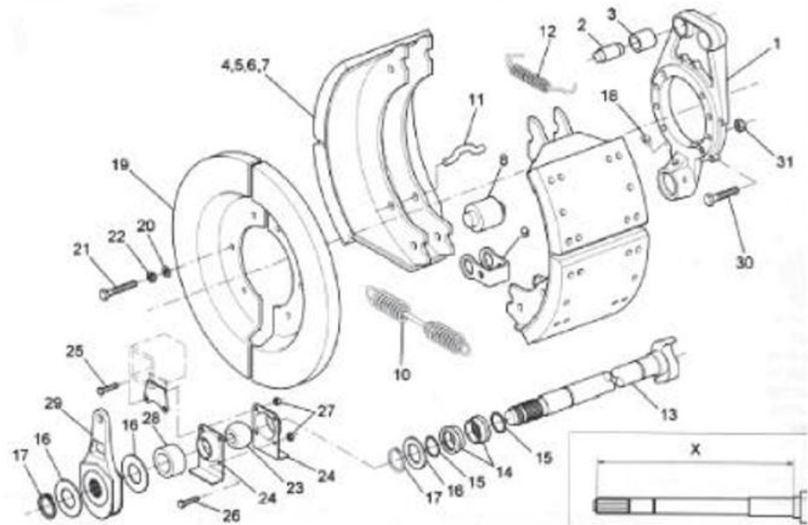


- |                      |         |
|----------------------|---------|
| 12. Brake Drum - 402 | 01BD014 |
| 420 x 180 10 Stud    | 403     |
| 395 x 180 10 Stud    | 402     |

- |                                |          |
|--------------------------------|----------|
| 13. Wheelstud<br>H7/8" X M22   | 01BN012D |
| RH7/8" X M22                   | 01BN011D |
| 14. Wheel Nut -<br>LH7/8" BSF, | 01WN104D |
| RH 7/8" BSF                    | 01WN103D |
| 15. Dowel -<br>5mm/6mm Dia     | 01DP001  |
| 16. Backnut -<br>RH M22 x 2.5, | 01WN002  |
| RH M20 X 1.5                   | 01WN102  |

## HF 420 brake assembly fabricated xem shoe

1. Torque Plate (Spider)	01TP100
2. Anchor Pin	01AP001
3. Anchor Pin Bush	01AB100
4. Lined Shoe Assy - Fabricated- 420 x 180 XEM, 420 x 130 XEM	01SH005L
5. Brake Shoe U/lined - Fabricated - 420 x 180 XEM, 420 x 130 XEM	01SH005UL
6. Brake Lining- Cam 420 x 180	01BL001B
Anchor 420 x 180	01BL002B
7. Rivets	01RV002I
8. Roller - fab Shoe	01CR001D
9. Retainer - fab Shoe	01RR001
10. Return Spring	01RS102I
11. Pin - Return Spring - Fab Shoe	01SP001
12. Return Spring - Anchor End	01RS101
13. C/Shaft - 37 Spline LH Dim X = 607 RH Dim X = 607	01SC002 01SC001
LH Dim X = 757 RH Dim X = 757	01SC010 01SC009
LH Dim X = 682	

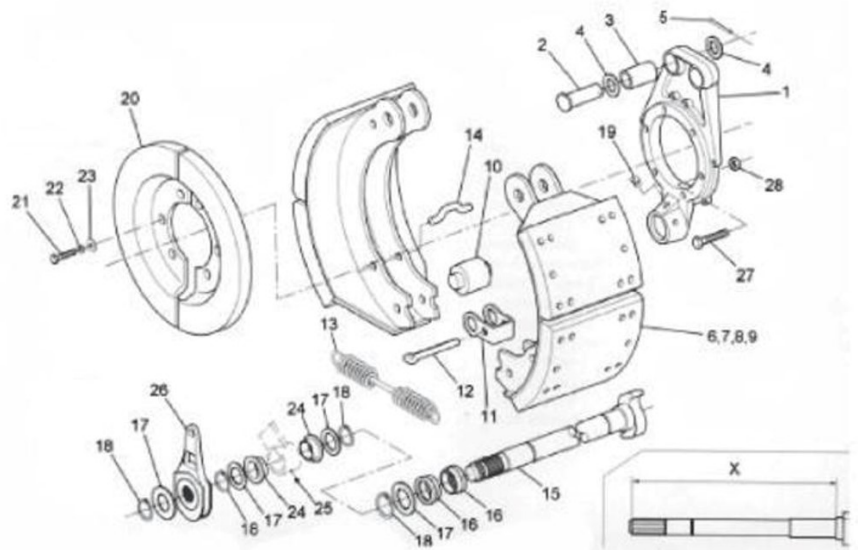


14. Spider Bearing	01CB006
15. O-Ring	
16. Washer 42 Dia	
17. Circlip Ext. 41 Dia	
18. Grease Nipple	01GN
19. Dust Cover L/R Dust Cover 1-Piece	01DC002
20. Washer 8 Dia	
21. Setscrew M8 x16	
22. Spr. Washer 8 Dia	

23. Camshaft Bush	01CB009
24. Retainer Plate	01CB018
25. Setscrew M10 x 30	
26. Setscrew M10 x 20	
27. Nyloc Nut M10	
28. Spacer	
29. Silk Adjuster - 37 Spl	01SA001
29. Auto Silk Adj.	01SA009C
30. Bolt M14 x 55	
31. Nyloc Nut M14	

## SW 420 x 180 brake assembly fabricated 'p' type shoe

1 Torque Plate spider	01TP100
2 Anchor Pin	01AA000
3 Anchor Bush	01AA000
4 Washer 32 dia	01CW005
5 Split Pin 4 x 40	01AA000
6 Lined B/Shoe Assy 7.8.9	01SH005L
7 Unlined Brake Shoe	01SH016
8 Brake Lining cam/anc	4515
9 Rivet	01RV002
10 Roller	01CR001
11 Roller Retainer	01RR001
12 Split Pin 5,7 x 90	01SP002
13 Return Spring	01RS102I
14 Return Spring	01RS101
15 Camshaft 10 Spl LH Dim=646 RH Dim=646	01
16 Spider Bearing	01CB006
17 Washer 38 dia	01CW004
18 Circlip ext. 38 dia	01AC002
19 Grease Nipple	01GN
20 Dust cover	01DC002



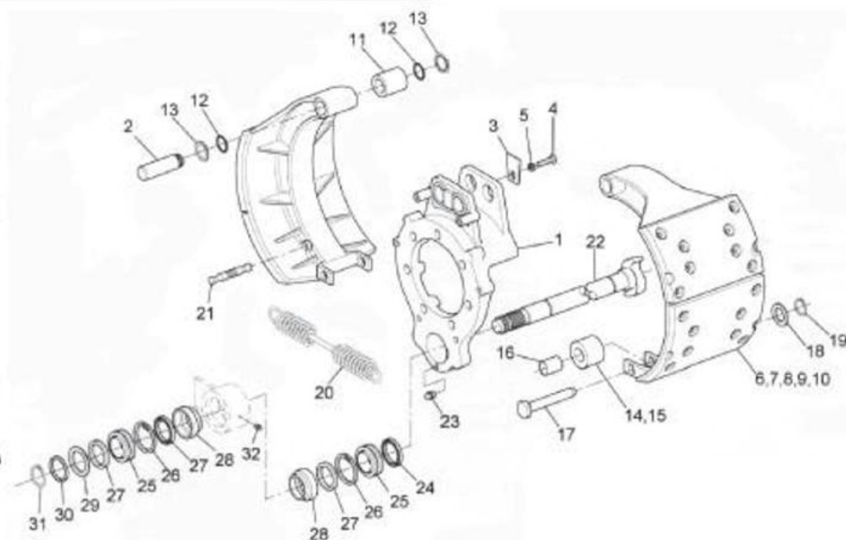
21 Set Screw M6x16	01
22 Washer Spr. 6 dia	01
23 Washer spec. 6 dia	01
24 Canshaft Bush	01
25 Grease Nipple	01GN

26 Silk Adjuster 10 spl	01SA002
27 Hex Head Bolt M16 x 60	16HT008
28 Nyloc Nut M16	16HT104



## HF 410 (m/benz) brake assembly

1	Torque Plate spider	01TP003
2	Anchor Pin	01AP100
3	Lock Plate	
4	Setscrew M10x 20	
5	Lock Washer	
6	Lined brake shoe assy	8,9,10,11,12,13,14,17 18.19.21 410 X 180/160
7	Unlined brake shoe assy	01SH005
8	Unlined brake shoe	
9	Brake lining 410x160	01BL007M 410x180
10	Rivets	01RV002I
11	Anchor Bush	01AB101
12	O-Ring	
13	Washer Retainer	01SH200
14	Roller Assy 15.16	01RP001
15	Roller	
16	Roller bush	
17	Roller pin	
18	Washer 17 dia	
19	circlip ext.17	
20	Return Spring	01RS121



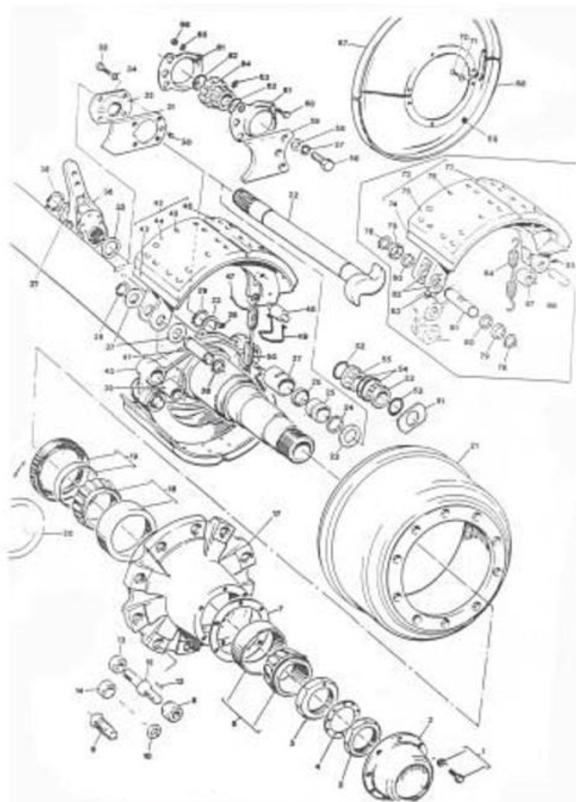
21	Pin - Ret. Spr
22	26 Spl. Cmshaft 500 dim. L/R
23	Grease Nipple
24	Oil Seal
25	Spherical Bearing
26	Circlip
27	Oil Seal

01SC110  
MERC  
CAM  
REPAIR  
KIT

28	Seal Holder
29	Washer spacer
30	Washer retainer 35 dia
31	Circlip ext. 34
32	Grease nipple

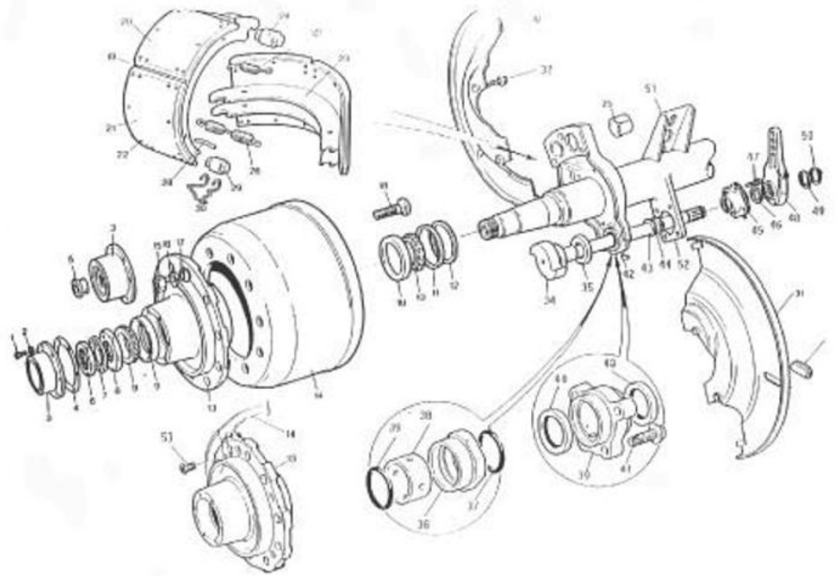
## U22500 series trailer axle

1.	Bolt Hub Cap	10 stud 11.1/4ml
2.	Hub Cap Grease Oil	22. Camshaft RH 420 brake LH 420 brake
3.	Nut Lock	23. Washer
4.	Washer Lock	24. O-Ring
5.	Nut Bearing Adjust	25. Bush
6.	Bearing Cup & Cone Outer	26. Seal
7.	Gasket Grease Oil	27. Bush
8.	Nut Wheel RH 7/8" BSF LH 7/8" BSF	28. Nipple Grease
9.	Sleeve RH 3/4 x 1.1/8" Budd LH 3/4 x 1.1/8" Budd	29. Circlip
10.	Cone Wheel Metric Outer	30. Nipple Grease
11.	Not required anymore	31. Bracket Cam Bearing 420 brake
12.	Dowel	32. Bearing Spherical
13.	Nut Lock 7/8" BSF	33. Capscrew Spherical Bearing
14.	Spacer Stud (Unbraked Axle)	34. Washer
15.	Stud Wheel RH 7/8" BSF 2/Wheel LH 7/8 BSF 2/Wheel RH 7/8" BSF 1/Wheel LH 7/8" BSF 1/Wheel 22mm x 1.5 RH 3/4" Budd LH 3/4" Budd	35. Washer
16.	Not required anymore	36. Slack Adjuster
17.	Hub 10 Stud 335mm PCD 8 Stud 275mm PCD 8 Stud 285mm PCD 10 Stud 11.1/4" PCD	37. Washer
18.	Bearing	38. Circlip
19.	Seal Oil/Wear Sleeve Grease Oil	39. Bush
20.	Cover Oil Seal (Unbraked Axes)	40. Spider Brake 420 Brake
21.	Drum Brake 420x180 10 stud 335ml 8 stud 275ml 8 stud 285ml	41. Pin Anchor
		42. Shoe & Lining Assy 420x180
		43. Shoe Unlined 420x180
		44. Lining Anchor End
		45. Rivet
		46. Lining Cam End
		47. Pin
		48. Roller
		49. Spring Retaining
		50. Spring Release
		51. Washer
		52. O-Ring
		53. Bush Inner
		54. O-Ring
		55. Bush Outer
		56. Screw
		57. Washer Spring
		58. Washer
		59. Bracket Cam
		60. Screw
		61. Housing Spherical Bearing
		62. O-Ring
		63. Nipple Grease
		64. Bearing Spherical
		65. Washer Springs
		66. Nut
		67. Dust Cover Set. (Both)
		68. Dust Cover Half Only
		69. Plug Rubber
		70. Screw
		71. Washer
		72. Not required anymore
		73. Shoe & Lining Assy HD
		74. Shoe Unlined HD
		75. Lining Anchor End
		76. Rivets
		77. Lining Cam End
		78. Circlip
		79. Retainer
		80. Felt-Anchor Pin
		81. Pin Anchor
		82. Bush Anchor Pin
		83. Lock Anchor Pin
		84. Spring Release
		85. Screw Lock
		86. Pin Roller
		87. Roller



## TQ series trailer axle - brake assembly

1	Hub Screw Cap	01CP101
2	Washer	
3	Hub Cap Oil	
	Hub Cap Grease	01CP002
4	Gasket Oil	
	Gasket Grease	01GS002
5	Plug Vent (oil)	
6	Nut	KIT
7	Washer Lock Assy	01AN053
8	Nut Bearing Adju	
9	Outer Bearing	212049
10	Inner Bearing	218248
11	Oil Seal Oil - 46305	01OS005
	Oil Seal grease	
12	Wear Sleeve grease	
13	Hub 10 Bolt OB	01HU020
14	Br. Drum OB - 429	01BD002
15	Wheel Nut L/R	01BN060
16	spigot mount	01WN105
17	Outer wheel cone	
18	Inner wheel cone	
	Bolts L/R Twin	
	IB and OB	

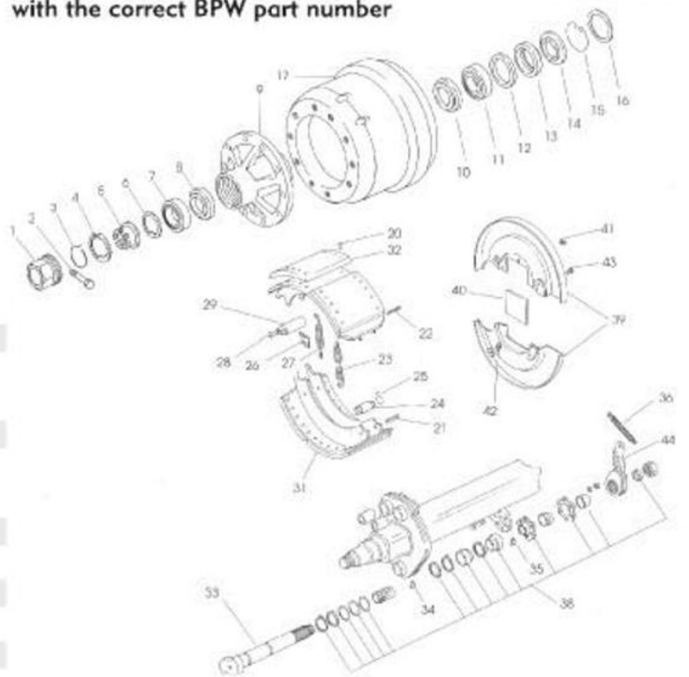


19	Lined Brake Shoe	01SH005
	Assy	
20	Brake lining CAM	01BL001
21	Brake Lining ANC	01BL002
22	Rivets	01RV002
23	Unlined Br. shoe assy	
24	Anchor Pin	01AR003
25	Anc. pin bush	
26	Return Spring	
27	Retainer Spring	

## BPW ECO hub system & brake

1	Hub Cap	
2	Bolt	
3	Spring ring	
4	Outer circlip	
5	Castle Nut	
6	Washer	
7	Outer roller bearing	
8	Thrust Washer	
9	Hub inc. spl. pin	
10	Dust Cover	
11	Inner roller bearing	
12	Ring	
13	Lip Seal	
14	Thrust Washer	
15	Inner circlip	
16	Exciter ring	
17	Brake Drum	
18	Splined pin	
	stud hubs	
19	Brake Drum	
20	Brake show rivet	
21	Splined pin	
22	Split Pin	
23	Ret. Spring	
24	Roller	
25	Retention clip	
26	Shaped plate	
27	Br. ret. spring	
28	Plug	
29	Brake Pin 420x180	
	420x200	
30	Bush	
31	Brake shoes incl	
	24, 25 w/lining	
32	Lining (asb. free)	
33	Camshaft 625 / 731	
	LH / RH	
34	Grease Nipple	
35	Grease Nipple	
36	Slk. adj. ret. spring	
37	Camshaft kit (o-rings)	
38	Camshaft rep. kit	
39	Dust cover	
40	Seal (120/150 dia)	
41	Plugs/seal non-abs	
	slot	

for reference only - please enquire about stock with the correct BPW part number



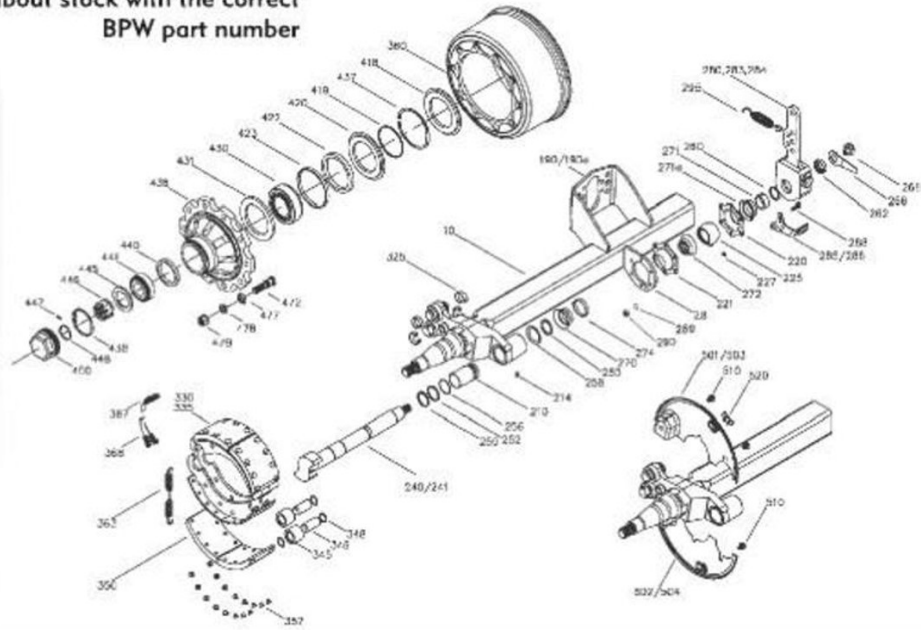
42	Plug
43	Locking Screw
44	Slack Adjuster



# BPW ECO plus system

for reference only - please enquire about stock with the correct BPW part number

- 10 Axle beam
- 28 Plate
- 190 Booster brkt.
- 210 Bush
- 214 Grease nipple
- Camshaft holder
- 220 Bearing box
- 221 Bearing box for G.N
- Bush Assy
- 255 Bush
- 227 Grease Nipple
- 227a Cover
- 240 LH Camshaft
- 241 RH Canshaft
- 250 Circlip
- 252 Ring
- 256 O-Ring
- 258 Seal
- 262 Washer
- 266 Wear Indicator
- 268 Hex Nut
- 270 Seal
- 271 Bush
- 271a Seal
- 272 Seal
- 274 Seal
- 280 Slack Adjuster
- 285 Dist. Plate
- 295 Return spring
- 325 Locking ring

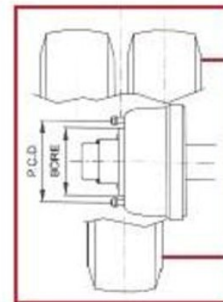
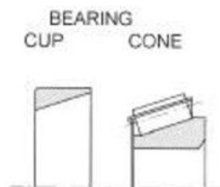
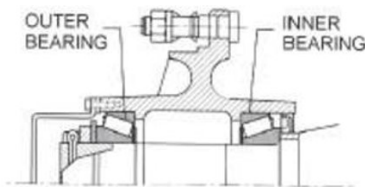


- 330 Brake Shoe compl
- 335 Br. shoe w/o lining
- 345 Roller
- 346 Bolt
- 348 Ring
- 350 Brake Lining
- 357 Rivet
- 363 Return Spring
- 367 Position ring str.

- 368 Position ring hooked
- 380 Brake Drum
- 422 Oil Seal
- 423 Ring
- 428 Seal
- 430 Roller Bearing
- Inner

## HUB bearing identification

## hub / wheel track measurement

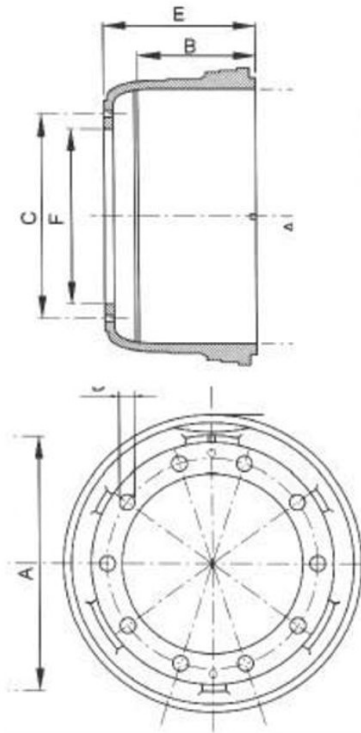


### dimensions

BORE	OUTSIDE DIA.	WIDTH
40	90	35.25
45	85	20.75
55	120	45.5
60	110	29.75
65	120	32.75
65	120	39
70	125	33.25
73.025	127	36.512
85.026	150.089	44.45
88.9	152.4	39.668
89.974	146.975	40
107.95	190.5	47.625

MAKE	NO	DIA.	PCD	Mounted Brake Drum	
Propar	11000	10	22	335	Inboard
Propar	11000	10	22	335	Inboard
Propar	11000	8	22	275	Inboard
Propar	15000	10	22	335	Inboard
Propar	15000	10	30	335	Inboard
Propar	11000	10	22	335	Outboard
Propar	11000	10	22	335	Outboard
Propar	11000	10	22	335	Outboard
Propar	15000	10	22	335	Outboard
Propar	15000	10	30	335	Outboard
Propar	11000	8	22	275	Inboard
Swift	8	22	275	Inboard	
Swift	8	22	275	Inboard	
Swift	8	22	275	Inboard	
Swift	8	22	275	Inboard	
Swift	10	7/8"	335	Inboard	
Swift	10	22	335	Inboard	
Swift	10	22	335	Outboard	
Swift/HFT	10	22	335	Outboard	
HFT 10S	10	7/8"	335	Inboard	
HFT 10S	10	7/8"	225	Inboard	
HFT 10MT	10	7/8"	335	Inboard	
HFT 8S	8	7/8"	375	Inboard	

## BRAKE drum identification



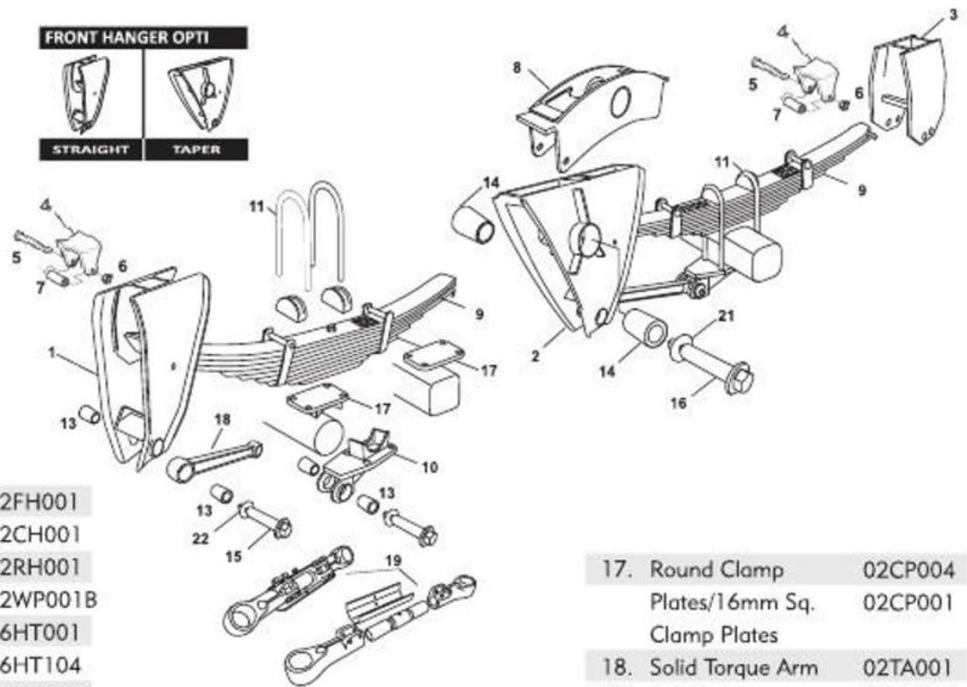
### KEY

- |                              |                         |
|------------------------------|-------------------------|
| A. Brake Drum Diameter       | D. Stud Hole Diameter   |
| B. Brake Shoe Path           | E. O/A Height Drum      |
| C. PCD Pitch Circle Diameter | F. Spigot Bore Diameter |

Brake Size	Make	A	B	C	D	E	F
420 x 180 10 Stud	HFT	419	190	335	24	246	290
420 x 180 10 Stud	HFT	419	190	335	32	246	290
420 x 180 10 Stud	HFT	419	190	335	22	246	290
420 x 180 10 Stud	Swift	419	190	335	24	246	295
420 x 130 10 Stud	HFT	419	142	335	24	198	290
420 x 130 10 Stud	HFT	419	142	335	24	219	290
410 x 180 10 Stud	MB	410	190	335	24	280	298
310 x 205 8 Stud	HFT	311	250	275	24	263	230
310 x 205 8 Stud	HFT	311	250	275	20	263	230
395 x 180 10 Stud	HFT	394	217	335	22	238	290
395 x 150 10 Stud	HFT	394	170	335	22	208	290
395 x 150 10 Stud	Swift	396	177	335	24	196	295
395 x 150 8 Stud	HFT	394	170	275	20	208	230
395 x 150 8 Stud	Swift	396	177	275	24	196	235
395 x 130 10 Stud	HFT	394	140	335	22	170	290
395 X 180 8 Stud	HFT	394	140	275	20	170	230
355 x 90 8 Stud	HFT	355	110	275	20	120	230
355 x 90 8 Stud	Swift	357	100	275	24	128	235
355 x 90 8 Stud	Swift	357	100	275	20	128	235
310 x 140 10 Stud	HFT	311	150	225	20	235	187
310 x 140 8 Stud	HFT	311	215	275	20	228	230
310 x 140 8 Stud	Swift	311	177	275	24	190	235



## F Suspension (overslung)

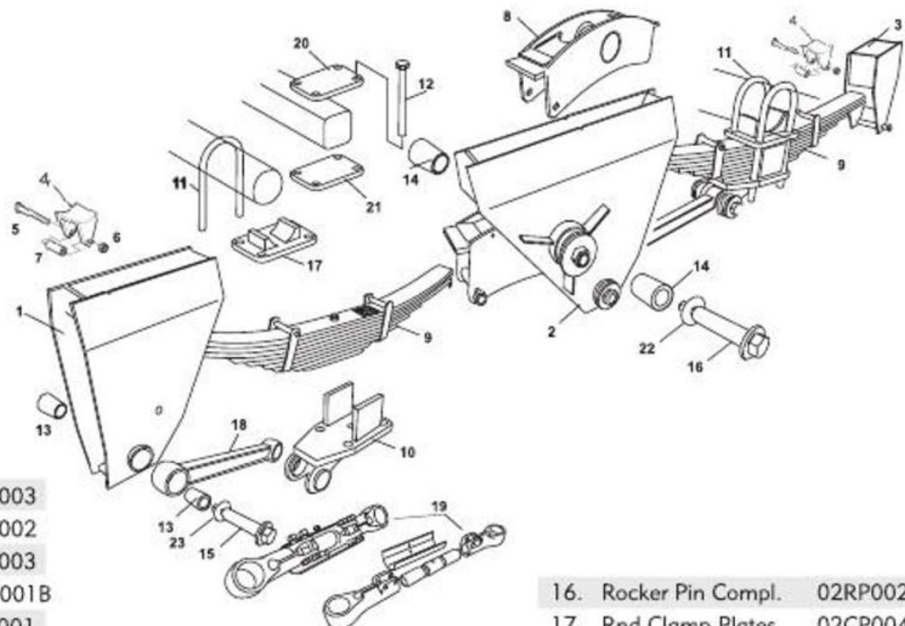


1. Front Hanger	02FH001
2. Centre Hanger	02CH001
3. Rear Hanger	02RH001
4. Wear Plate Ass'y	02WP001B
5. M16 x 150 Bolts	16HT001
6. Nyloc Nut M16	16HT104
7. Sleeve	02WP008
8. Rocker	02EQ001
9. Spring Pack 8 BL	02SP100
9 Blade	02SP101
M16 x 130 Bolts	16HT0471
10. Rnd /Sq. Axle Seats	02AS002/1

11. 8/9 Blade U - Bolt	02UB001B
13. Poly' Torque Arm Bush	02BH004T
14. Poly' Rocker Bush	02BH001C
15. Torque Arm Pin - Compl.	02TP001
16. Rocker Pin Complete	02RP002B

17. Round Clamp	02CP004
Plates/16mm Sq.	02CP001
Clamp Plates	
18. Solid Torque Arm	02TA001
19. Adjustable	02TA005
Torque Arm	
20. Strongback	02SB1001
21. Rocker Pin Washer	02RP004F
22. Torque Arm	02TP002
Pin Washer	

## J Suspension (underslung)

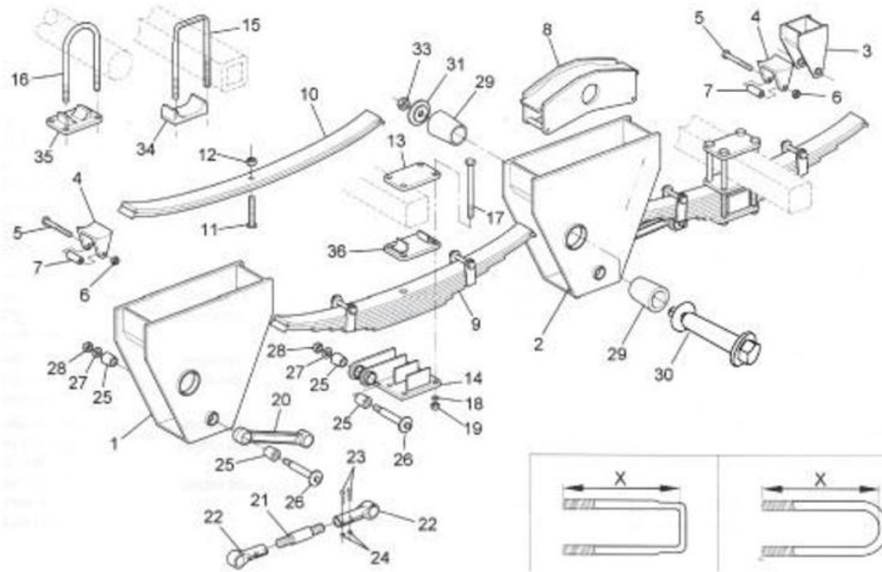


1. Front Hanger	02CH003
2. Centre Hanger	02CH002
3. Rear Hanger	02RH003
4. Wear Plate Ass'y	02WP001B
5. M16 x 150 Bolts	16HT001
6. Nyloc Nut M16	16HT004
7. Sleeve	02WP008
8. Rocker	02EQ001
9. Spring Pack - 9 Bl.	02SP101
10. J - Axle Seats	02AS003B
M16 x 130 Bolts	16HT0471

11. U - Bolt	02UB003B
12. Bolt - 105/112 Sq Axle	16HT301
M22x325	
13. Poly'ane Torque Arm Bush	02BH004T
14. Poly'ane Rocker Bush	02BH001C
15. Torque Arm Pin - Compl.	02TP001

16. Rocker Pin Compl.	02RP002B
17. Rnd Clamp Plates	02CP004
18. Solid Torque Arm	02TA001
19. Adj. Torque Arm	02TA005
20. 16mm Cl/ Plates	02CP004
21. 20mm Cl/ Plates	02CP007
22. Rocker Pin Washer	02RP004F
23. Torque A/Pin Washer	02TP002

## L - Suspension - Underslung

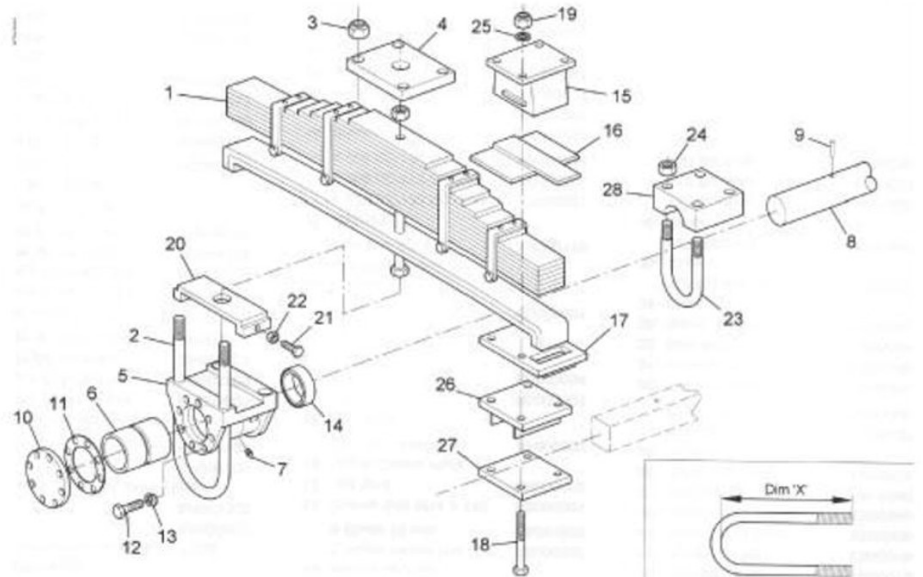


1. Front Hanger L/R	02FH004
2. Centre Hanger L/R	02CH004
3. Rear Hanger	02RH005
4. Wear Plate Ass'y	02WP001
5. M16 x 150 Bolts	16HT001
6. Nyloc Nut M16	16HT104
7. Sleeve	02WP008
8. Rocker	02EQ001
9. Spring Pack	02SP100
8/9 Blade	02SP101
M16 x 130 Bolts	16HT0471
10. Main Blade Set	02SP205
11. Centre Bolt	02CB002
12. Nut	
13. Upper Clamp Plate	02CP008
14. Axle Seat	02AS015
15. M22 x 350 Bolts (sq.)	

16. U-Bolt (Round)	02UB005
17. M22 Bolt	16HT002
18. Washer 22 dia.	16HT203
19. M22 Nyloc Nut	16HT102
20. Solid Torque Arm	02TA001
21. Adjuster	02TA005
22. Torque Arm End - L/R	02TA025R/L
23. M12 x 55 Bolt	16HT061

25. Torque Arm Bush	02BH004
26. T/ Arm Pin	02TP001
29. Rocker Bush	02BH003
30.. Rocker Pin Comp.	02RP002

## H2 Tandem Bogie Suspension



1. Spring -	
Std 15 Bl	02SP102
HD 12 Bl.	02SP108
2. U-Bolt M30	02UB004
3. M30 Nyloc Nut	16HT100
4. Clamp Plate	02CP007
5. Pivot Block	02PB001
6. Pivot Bush	02BB001
7. Grease Nipple	02GN001
8. Cross Shaft	02CS001
9. Locating Pin	02CS001L
10. End Plate	02EP001
11. End Gasket	02GS007
12. Set Screw	16HT066
13. Washer	16HT213
14. Oil Seal	01OS002
15. Spring Hood	02SH002
16. T - Rubber	02TR001
17. Slotted Plate	02SP002
Bolt & Nut	16HT002
Nut	16HT102
20. Bogie Adjuster	02BA001

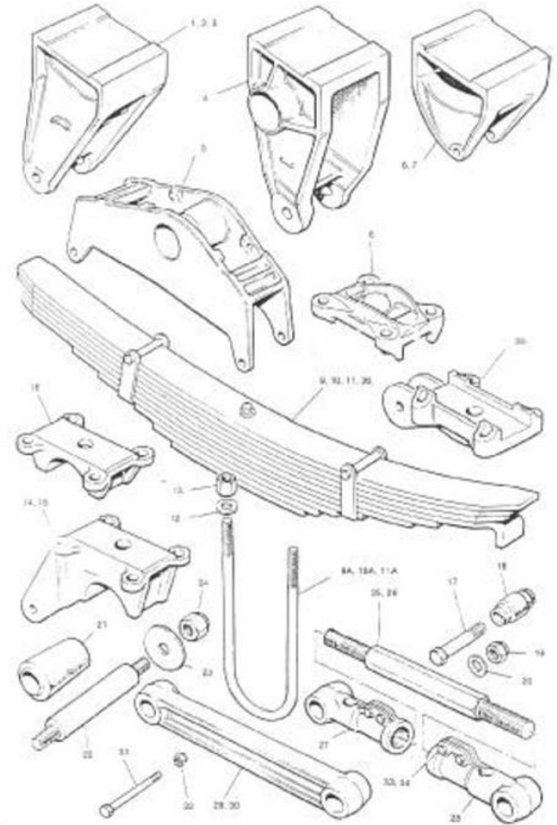
21. 20x70 Bogie Adj Bolt	16HT046
23. Cross Shaft U-Bolt	02UB006
26. Upper Clamp Plate	02CP007
27. Lower Cl. Plate	
28. Mounting Block	02MB001



## PRO 'T' Series Suspension

1. Front Hanger
2. Front Hanger Bracket
3. Front Hanger - towing
4. Equaliser Bracket Std
5. Equaliser
6. Rear Hanger Bracket
7. Rear Hanger Bracket HT
8. Top Plate
9. Spring 8 Blade
- 9a Spring U-Bolt
10. Spring 9 Blade
- 10a Spring U-Bolt
11. Spring 10 Blade
- 11a Spring U-Bolt
- 12 U-Bolt Washer
13. U-Bolt Nut
14. Spring seat std
15. Spring Seat - Low
16. Spring Seat u/slung
17. Torque arm bolt
18. Torque arm bush
19. Torque Arm bolt nut
20. T/Arm Bolt washer
21. Equaliser Bush

22. Equaliser Shaft
23. Equaliser Shaft Washer
24. Equaliser Shaft Nut
25. Adj. T/Arm Screw
26. Adj. T/Arm Screw rr long
27. Adj. T/Arm end RH
28. Adj. T/Arm end LH
29. Solid T/Arm short
30. Solid T/Arm long
31. Rocker & Rear hanger bracket
32. Rocker and Rear hanger bracket nut
33. Adj T/Arm end bolt
34. nut
35. T/Arm mounting bracket U/S



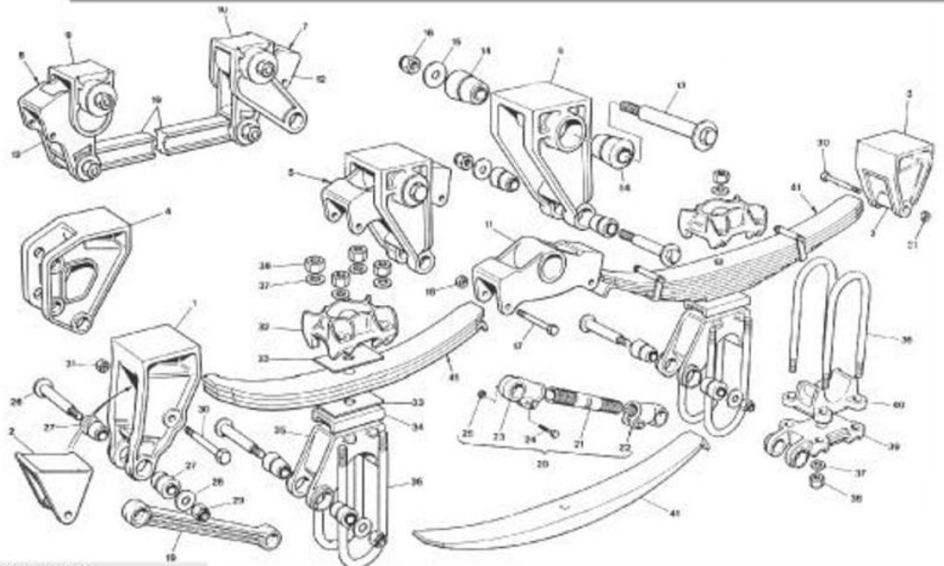
## PRO SMT Suspension

1. Front Hanger Bracket
2. Wear Insert
3. Rear Hanger Bracket
4. Front Drawbar Bracket
5. Equaliser Assy - Close Coupled
7. Rear Equaliser Assy - W/Spread
8. Equaliser Bracket - Close Coupled
9. Fwd Equaliser Brkt - W/Spread
10. Rear Equaliser Brkt - W/Spread
11. Equaliser - Close Coupled
12. Equaliser - Wide Spread
13. Equaliser Bolt
14. Equaliser Bush
15. Equaliser Bush Clamp Washer
16. Equaliser Bolt Locknut
17. Equaliser Rebound Bolt
18. Equaliser Rebound Bolt Nut
- 19A Rigid Torque Arm (464)
- 19B Rigid T/ Arm - Wide Spread (699)
- 19C Rigid T/ Arm - Wide Spread (381)
- 19D Rigid T/ Arm - Underslung (438)
- 20A Adj. T/ Arm Assy (498-441)
- 20B Adj. Torque Arm Assy - W/Spread
- 20C Adj. T/Arm Assy - Underslung
- 21A Adj. Torque Arm Screw
- 21B Adj. Torque Arm Screw
- 21C Adj. Torque Arm Screw
- 22A Adj. Torque Arm Assy - LH
- 22B Adj. Torque Arm Assy - RH
- 23A Adj. Torque Arm End - LH
- 23B Adj. Torque Arm End - RH
24. Clamp Bolt

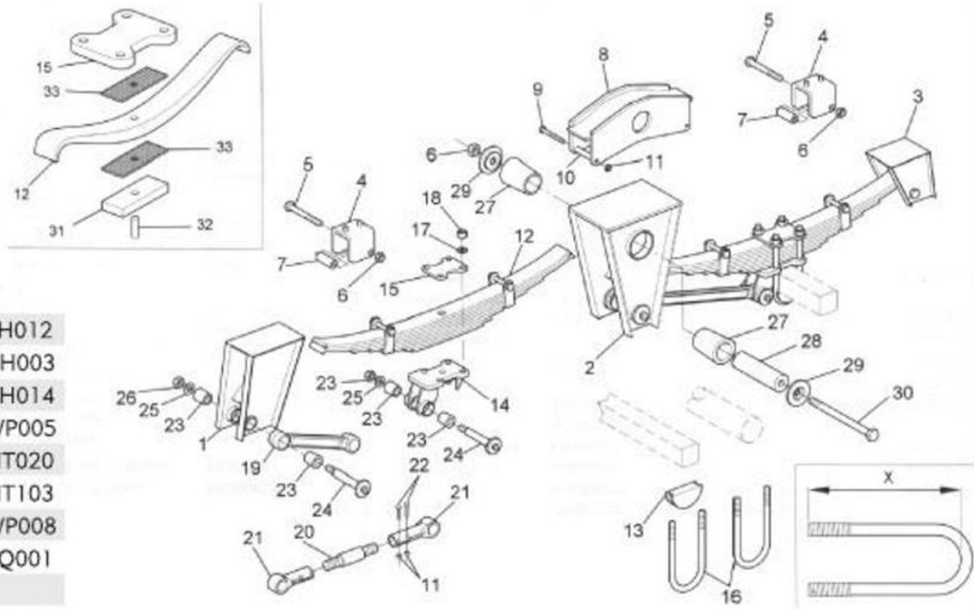
25. Clamp Bolt Nut
26. Torque Arm Bolt
27. Torque Arm Bush
28. Torque Arm Bolt Washer
29. Torque Arm Bolt Locknut
30. Wear Insert Bolt
31. Wear Insert Bolt Locknut
32. Top Plate
33. Delrin Liner
34. Spacer Block (25mm)
34. Spacer Block (70mm)
34. Spacer Block (45mm)

35. Spring Seat (26mm)
35. Spring Seat (51mm)
36. U Bolt - Standard
36. U Bolt - Underslung
37. U Bolt Washer
38. U Bolt Nut
39. Torque Arm Mounting Brkt - Underslung
40. Spring Seat - Underslung

- 41A Spring Assy - 3 Leaf
- 41B Spring Assy - 3 Leaf - Tridem Centre
- 41C Spring Assy - 8 Leaf
- 41D Spring Assy - 8 Leaf - Tridem Centre
41. Spring Single Taper Leaf
41. Spring Single Taper Leaf - Tridem Centre



## SW "SWPT" overslung suspension

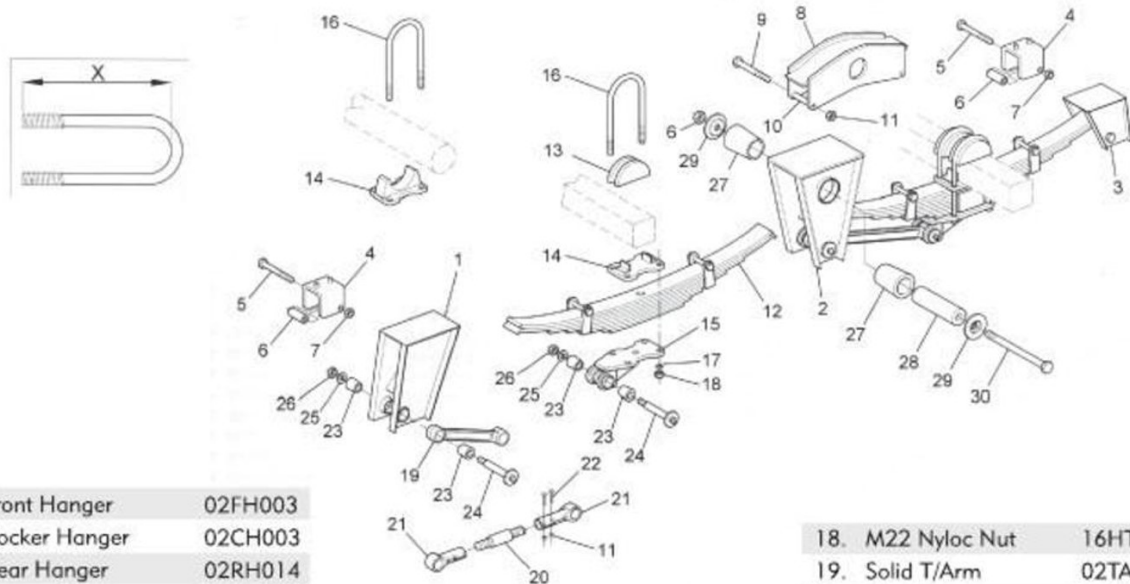


1. Front Hanger	02FH012
2. Rocker Hanger	02CH003
3. Rear Hanger	02RH014
4. Slipper Liner	02WP005
5. Bolt M20 x 140	16HT020
6. Nyloc Nut M20	16HT103
7. Spacer Tube	02WP008
8. Rocker	02EQ001
9. Bolt M12x120	
10. Spacer Tube	
11. M12 Nyloc Nut	
12. Springpack 8/9	02SP100/1
13. Strongback 127 dia 105 sq axle	02SB103
14. Spring Chair	02AS029
15. Top Plate 127 dia ax 105 sq axle	02CP004 02CP001
16. U-Bolt	02UB001

17. Washer 22 dia.	
18. M22 Nyloc Nut	16HT102
19. Solid Torque arm	02TA010
20. Adj. Torque arm	02TA006
21. Torque Arm Bush	02BH004
22. Torque Arm Pin compl.	02TP001

23. Torque Arm Bush	02BH004
24. Torque Arm Pin compl.	02TP001
25. Washer 25 dia.	
26. Nyloc Nut	
27. Rocker Bush	02BH003
28. Rocker Spacer Tube	02RP003
29. Retainer Washer	02RP004
30. M20x250 Bolt	16HT006
31. Spring pack	
32. Dowel	
33. Delrin Liner	

## SW 'SWPT' Underslung Suspension



1. Front Hanger	02FH003
2. Rocker Hanger	02CH003
3. Rear Hanger	02RH014
4. Slipper Liner	02WP005
5. Bolt M20x140	16HT020
6. M20 Nyloc Nut	16HT103
7. Spacer Tube	02WP008
8. Rocker	
9. Bolt M12x120	
10. Spacer Tube	
11. M12 Nyloc Nut	

12. Spring pack 8/9 BI	02SP100/1
13. Strongback 127 rnd 105 sq	02SB103
14. Axle seat	02AS030
15. Spring Chair	02AS029
16. U-Bolt	02UB005
17. Washer 22 dia.	

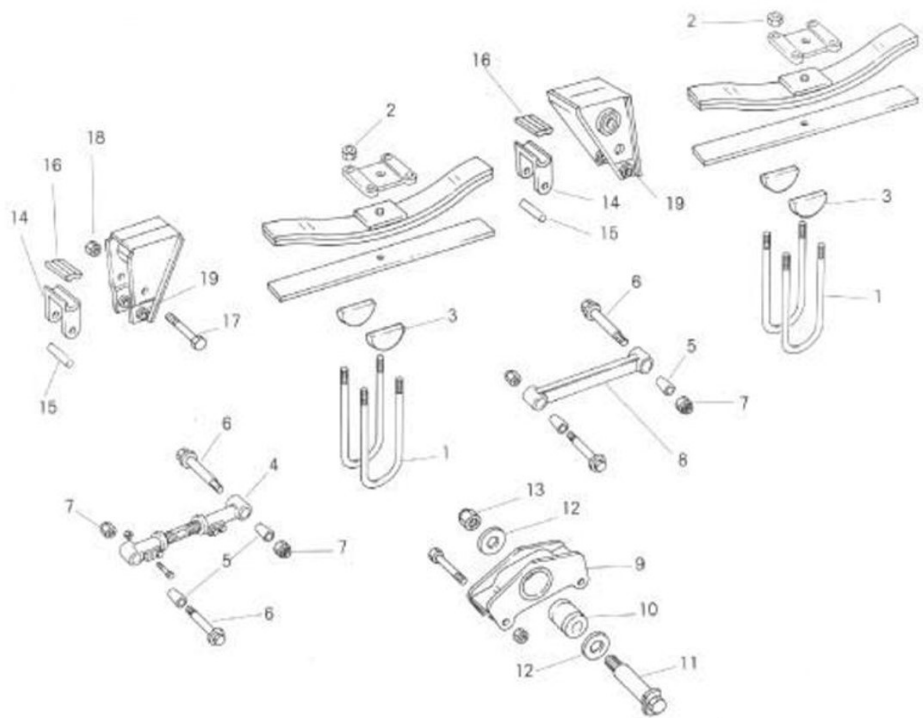
18. M22 Nyloc Nut	16HT102
19. Solid T/Arm	02TA010
20. Adj. T/Arm	02TA006
21. T/Arm Bush	02BH004
22. T/Arm Pin	02TP001
23. T/Arm Bush	02BH004
24. T/Arm Pin	02TP001
25. Washer 25 dia.	
26. Nyloc Nut	
27. Rocker Bush	02BH003
28. Rocker Pin Compl.	02RP002B
29. Retainer Washer	02RP004
30. M20x250 Bolt	16HT006
31. Delrin Liner (not shown)	



## BPW Mechanical Suspension

We supply original BPW Spares on condition that we are supplied with the correct BPW Part Numbers

1. U-Bolt
2. U-Bolt Nut
3. Segment
4. Adj. Torque Arm
5. Torque Arm Bush
6. Bolt (T/Arm)  
150x30  
170x30  
190x30
7. T/Arm Lock Nut
8. Solid T/Arm
9. Rocker
10. Rocker Bush
11. Rocker Bolt
12. Washer
13. Lock Nut
14. Bracket
15. Tube
16. Slide
17. Bolt
18. Lock Nut
19. Bush

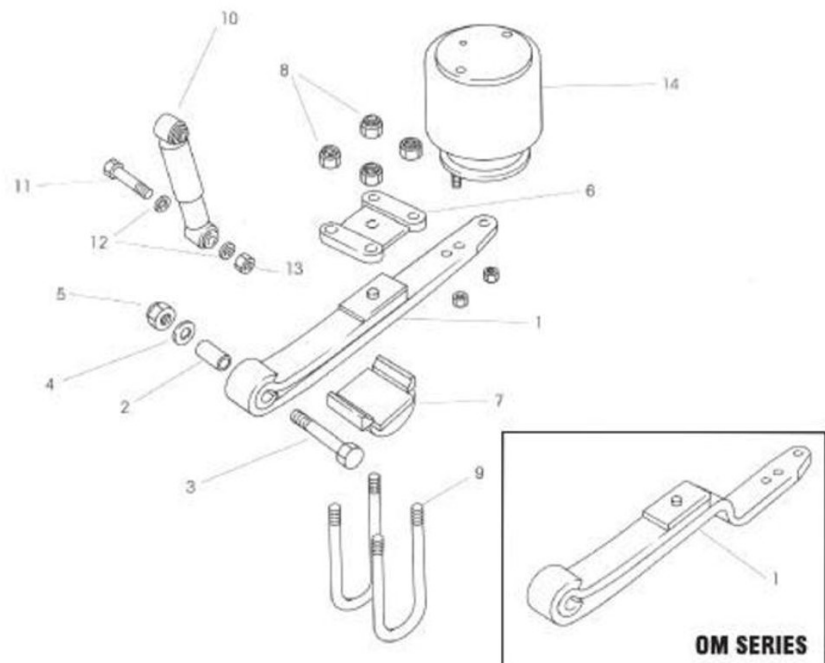


## BPW Air Suspension - O, OM, OT Series

We supply original BPW Spares on condition that we are supplied with the correct BPW Part Numbers

### O-Series

1. Leaf Spring
2. Bush
3. Bolt
4. Washers
5. Lock Nut
6. Spring Plate
7. Segment
8. Lock Nut
9. U-Bolt
10. Shock Absorber
11. Mounting Bolt
12. Washer
13. Lock Nut
14. Air Spring



OM SERIES

## Suspension Components



### Torque Arm Bushes



### Rocker Bushes



### spring packs & trailing arms

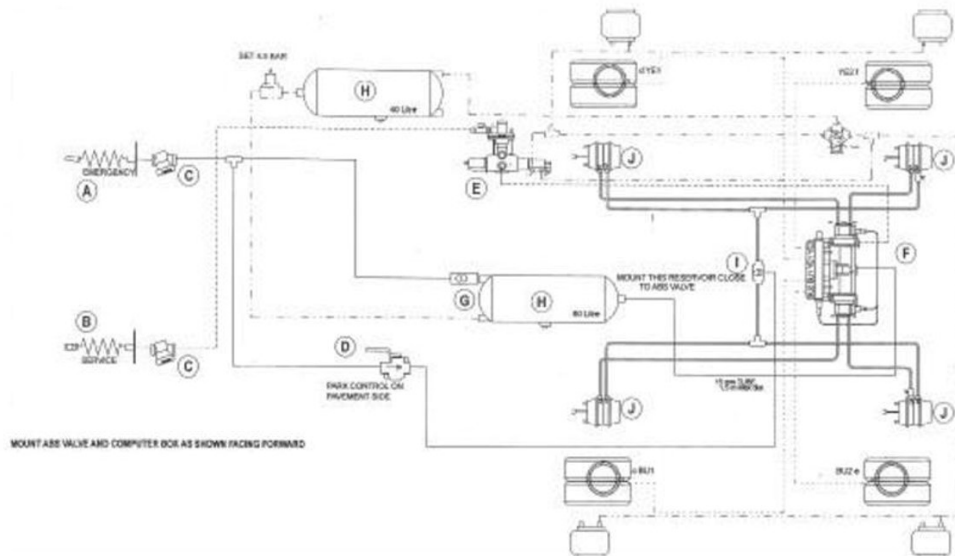


- 7 blade spring pack - 76 x 16
- 8 blade spring pack - standard
- 8 bl. 8.5 ton h/duty - 3 x 16 / 5 x 20
- go suspension - 8 blade
- ror centre - 8 blade
- ror off centre - 8 blade
- 9 blade spring pack - standard
- 9 bl. exp. s/pack - 3 x 16 / 6 x 14
- 12 blade spring pack
- 12 blade bpw repl. - 100 x 12
- 15 blade spring pack





### TANDEM axle semi trailer ABS air suspension



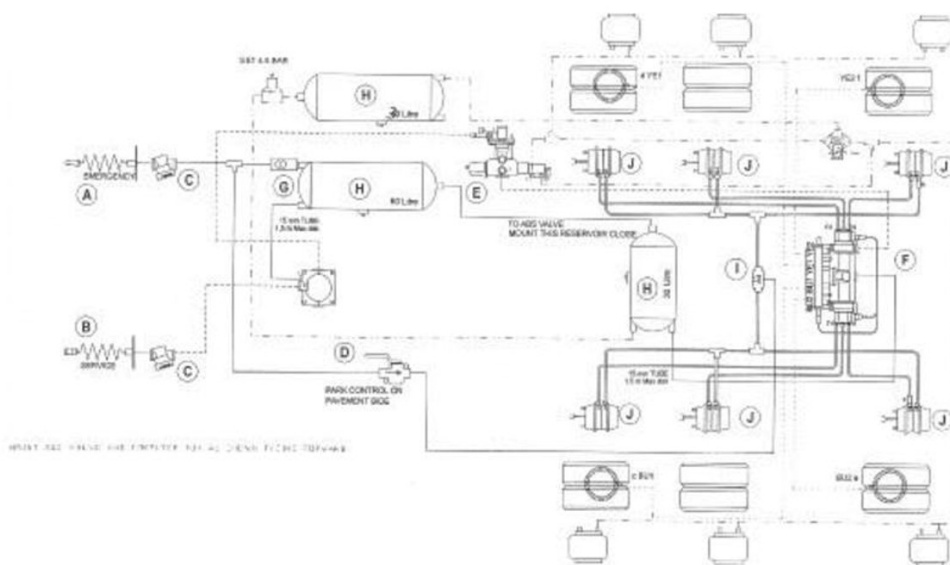
MOUNT ABS VALVE AND COMPUTER BOX AS SHOWN FACING FORWARD

— RUBBER HOSE  
 - - - EMERGENCY LINE RED  
 - - - SERVICE LINE YELLOW

TANDEM AXLE SEMI TRAILER BRAKE SYSTEM S.A.B.S. 1506 SPECIFICATION  
 NEW GENERATION ABS LOAD SENSING VALVE FOR AIR SUSPENSION  
 NOT A RELAY LOADSENSING VALVE  
 4 X SPRING BRAKES

TITLE  
 TANDEM AXLE  
 SEMI TRAILER 4S/2M ABS  
 AIR SUSPENSION

### TRIDEM axle semi trailer ABS air suspension



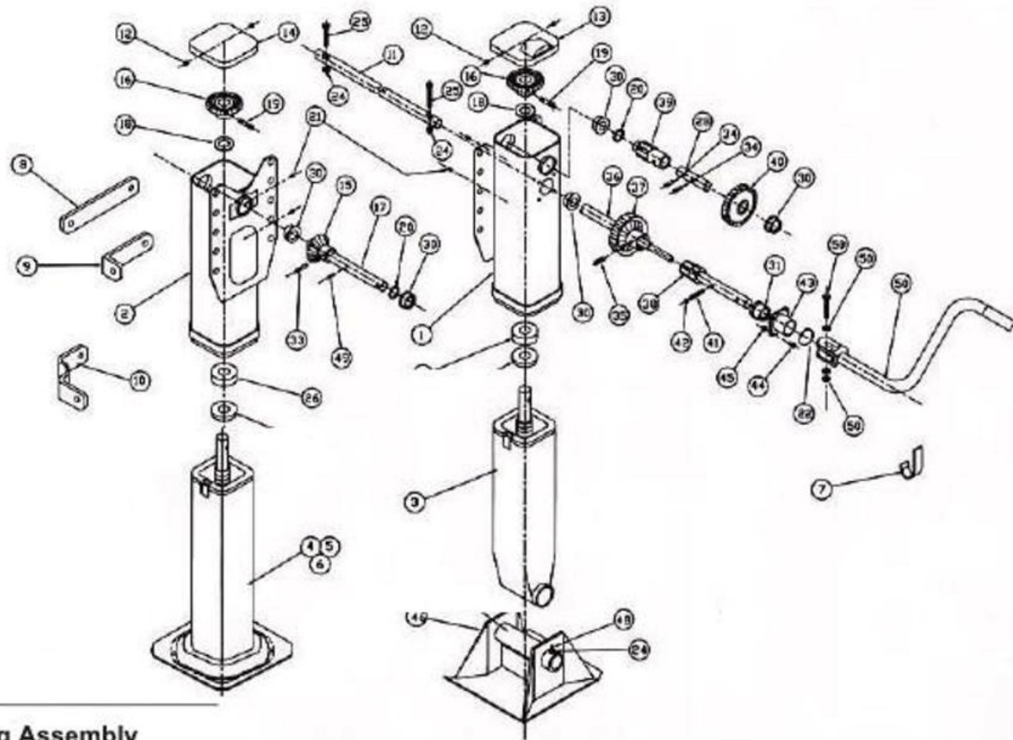
MOUNT ABS VALVE AND COMPUTER BOX AS SHOWN FACING FORWARD

— RUBBER HOSE  
 - - - EMERGENCY LINE RED  
 - - - SERVICE LINE YELLOW

TRIDEM AXLE SEMI TRAILER BRAKE SYSTEM S.A.B.S. 1506 SPECIFICATION  
 NEW GENERATION ABS LOADSENSING VALVE FOR AIR SUSPENSION  
 NOT A RELAY LOADSENSING VALVE  
 6 X SPRING BRAKES OR 4 X SPRING BRAKES AND 2 X BOOSTERS ON STEERING AXLE

TITLE  
 TRIDEM AXLE  
 SEMI TRAILER 4S/2M ABS  
 AIR SUSPENSION

# A402G/T landing legs



## Shift Housing Assembly

Includes Items 22, 41, 42 & 43  
above

Part Number – B10229S

## Input Gear & Shift Housing Assembly

Includes Items 22, 38, 41, 42 & 43  
above

Part Number – B10285

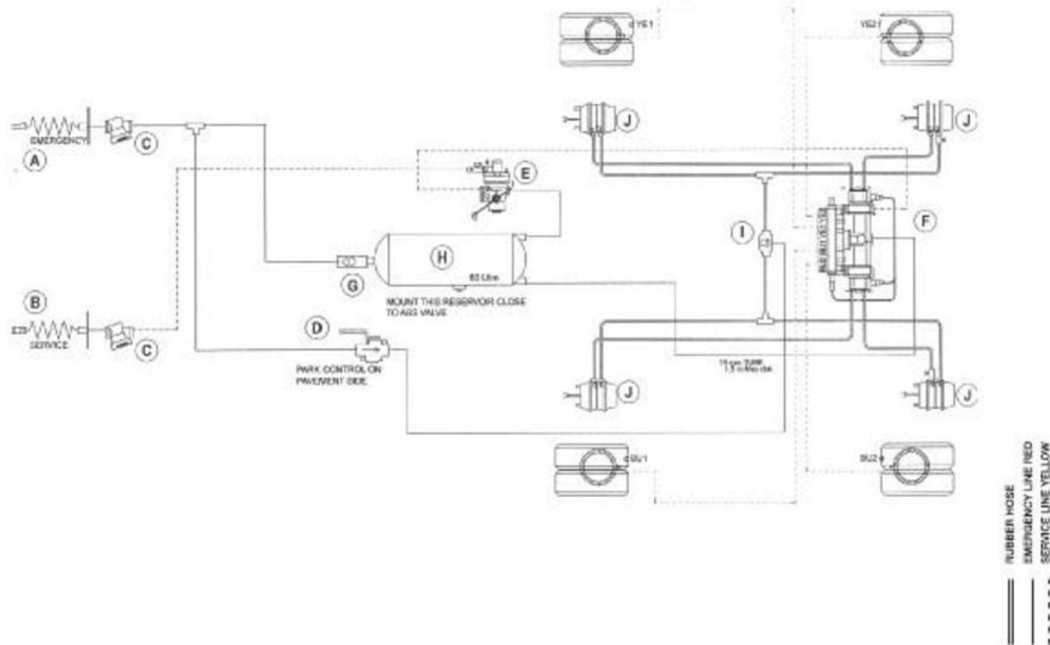


## Individual Components

Item	Description	Qty	Part No.
7	Crank Hanger	1	B10261
8	Brace Lug - Flat	2	C10262
9	Brace Lug - 90°	2	C10263
10	Brace Lug - W Standard	2	C10108
11	Intermediate Cross Shaft	1	B10066
12	Cover Screw	4	A10059.1
13	Cover - Two-Speed	1	C10217
14	Cover - One-Speed	1	C10259
15	Pinion Gear	1	C10177
16	Bev Gear	2	C10155
17	Pinion Shaft - One-Speed	1	B10130
18	Thrust Washer	2	A10102
19	Grooved Pin	2	A10052.3
20	Spacer Washer	2	A10218
21	Grease Fitting	4	A10040
22	Grease Seal	1	A10283
23	Strut Brace (not shown)	4	C10209
24	Self Locking Nut	4	A10038.7
25	Cross Shaft Bolt - 3/8 x 2" Gr 5	2	A10037.1
26	Thrust Bearing	2	A10033
27	Collar	2	A10101
28	Output Shaft	1	A10212
30	Bushing (Standard)	5	A10255
	Bushing and Seals (Magnum)	5	A10727
33	Roll Pin - 3/8 x 1 1/2"	1	A10054.3
34	Spiral Pin	2	A10260.1
35	Roll Pin - 3/8 x 1 3/4"	1	A10054.7
36	Output Cluster Shaft	1	B10236
37	Output Cluster Gear	1	C10234
38	Input Gear Shaft	1	C10233
39	Output Spur Gear	1	C10078
40	Input Spur Gear	1	C10085
41	Detent Spring	1	A10049
42	Detent Ball	2	A10048
43	Shift Housing	1	B10229
44	Shift Housing Bolt	4	A10230
45	Self Locking Nut	4	A10038
	Shoe - 10" x 10" x 4 1/2" Standard	2	C10035
46	Shoe - 10" x 10" x 2"	2	C10135
	Shoe - 10" x 12" x 4 1/2"	2	C10256
	Shoe - 10" x 12" x 2"	2	C10257
47	Shoe Axle	2	B10036
48	Hex Head Bolt	2	A10037.3
49	Roll Pin 1/2" x 1 1/4"	1	A10054.6



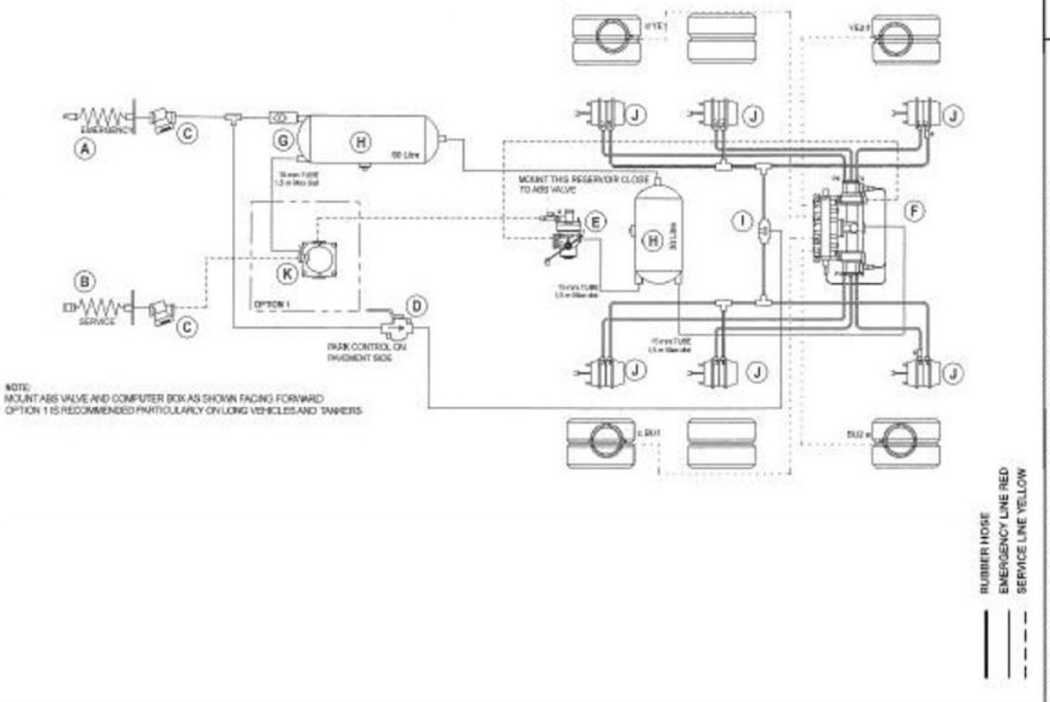
### TANDEM axle semi trailer



TITLE  
TANDEM AXLE  
SEMI TRAILER 4S/2M ABS  
MECH SUSPENSION

TANDEM AXLE SEMI TRAILER BRAKE SYSTEM S.A.B.S. 1506 SPECIFICATION  
 RELAY LOAD SENSING VALVE FOR MECHANICAL SUSPENSION  
 4 X SPRING BRAKES

### TRIDEM axle semi trailer



TITLE  
TRIDEM AXLE  
SEMI TRAILER 4S/2M ABS  
MECH SUSPENSION

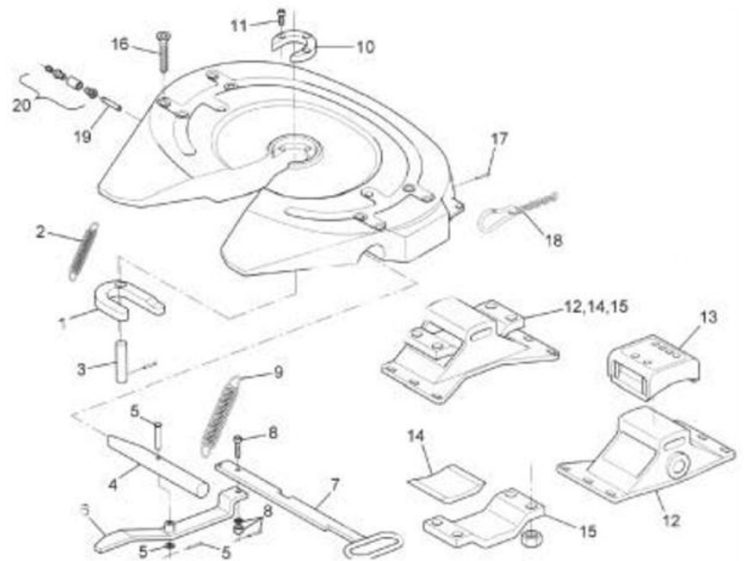
TRIDEM AXLE SEMI TRAILER BRAKE SYSTEM S.A.B.S. 1506 SPECIFICATION  
 RELAY LOAD SENSING VALVE FOR MECHANICAL SUSPENSION  
 6 X SPRING BRAKES

NOTE:  
 MOUNT ABS VALVE AND COMPUTER BOX AS SHOWN FACING FORWARD  
 OPTION 1 IS RECOMMENDED PARTICULARLY ON LONG VEHICLES AND TRAILERS

## 36C fifth wheel

- 1 lock jaw
- 2 lock jaw spring
- 3 pivot for lock jaw
- 4 locking bar
- 5 Locking bar bolt
- 6 lever
- 7 operating handle
- 8 head bolt
- 9 double tension spring
- 10 wearing ring
- 11 socket head bolt
- 12 Pedestal non-weldable  
Pedestal - weldable
- 13 upper rubber cushion
- 14 lower rubber cushion
- 15 mounting bracket
- 16 hex bolt
- 17 split pin
- 18a spring hook, chain & wedge
- 18b springhook compl with chain
- 19 lubrication fitting
- 20 grease nipple complete
- 21 adjusting screw

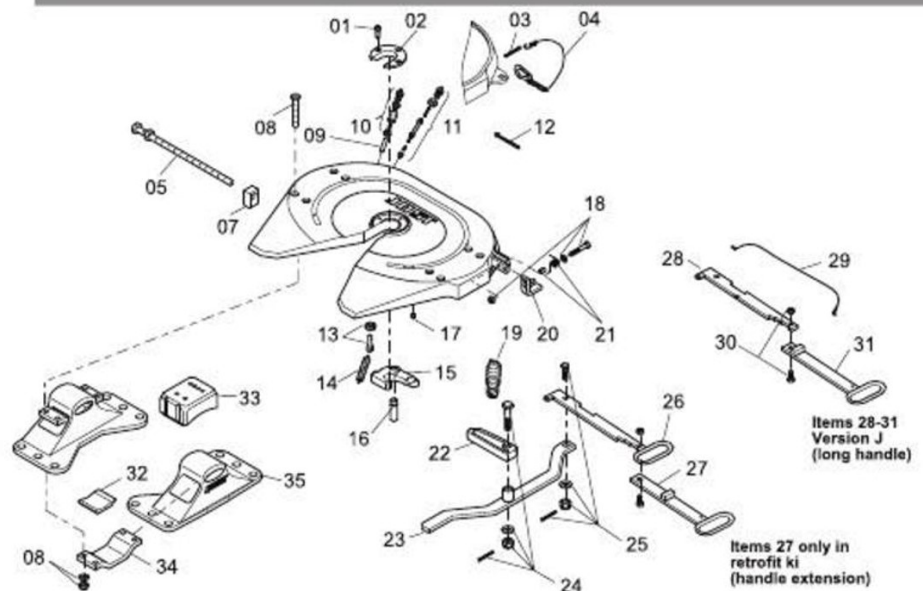
- SK 2105-15
- SK 847
- SK 2121-13
- SK 2106-31
- SK 2121-14
- SK 2105-01
- SK 2105-07
- SK 1513
- SK 2105-11
- SK 2105-19
- SK 2121-07
- SK 2104-02
- SK 2104-02X
- SK 1259
- SK 2105-25
- SK 1372
- SK 60
- SK 1974
- SK 1436V
- SK 1436
- SK 2105-28
- SK 1976
- SK 2121-76



Type	Overall Height mm	Imposed Load On Tractor kg	D-Value kN	Weight Approx. kg	Evidence Number
JSK 36 C/150	150	20000	152	157	9007-10
* JSK 36 C/170	170	20000	152	160	
JSK 36 C/185	185	20000	152	162	
* JSK 36 C/250	250	20000	152	170	DR 62,63
* JSK 36 C/300	300	20000	152	185	S1773-1990

## 37C fifth wheel

- 1 socket head bolt SK 2121-07
- 2 wearing ring SK 2105-19
- 3 split pin SK 1974
- 4 spring hook SK 1436
- 5 adj screw SK 3105-150
- 7 guide SK 3205-07
- 8 counters'nk bolt SK 2121-15
- 9 lube tube SK 1989
- 10 nut & bolt SK 1976
- 12 cable tie SK 3121-13
- 13 eye bolt, comp SK 2122-04
- 14 tension spring SK 847
- 15 lock jaw SK 1489
- 16 bolt SK 2106-67
- 17 threaded stopper 000.010.021
- 18 Hex bolt, compl. SK 3521-03
- 19 dbl. tension spring SK 3105-20
- 20 latch complete SK 3121-52
- 21 spring noose w/spacer SK 3121-59
- 22 locking bar SK 3205-06
- 23 lever SK 3105-18
- 24 bar bolt, compl SK 3221-01
- 25 hex bolt, comp SK 1513
- 26 handle SK 3105-15
- 28 locking bar for type j SK 3105-115
- 29 latch cord, compl SK 3521-02



- 30 hex bolt compl SK 2421-50
- 31 handle for type j SK 3105-113
- 32 lower rubber cushion SK 2105-25
- 33 upper rubber cushion SK 1259
- 34 bridge SK 1372
- 35 pedestal SK 2104-02



# most products and components

					SK 1489-2 - 37C
<b>WEAR RING</b>	<b>LOCKING BAR - JSK 36</b>	<b>UPPER RUBBER CUSHION</b>	<b>LOWER RUBBER CUSHION</b>	<b>LOCKING JAW</b>	
SK 2105-19	SK 2105-17	SK 1259	SK 2105-25	SK 2105-15 - 36C	
					SK 3105-18- 37C
<b>LOCKING BAR - JSK 37</b>	<b>DOUBLE TENSION SPRING</b>	<b>SPRING HOOK</b>	<b>MOUNTING BRACKET</b>	<b>LEVERS</b>	
SK 3205-06	SK 2105-11			SK 2105-01 - 36C	
					
<b>CRANK &amp; HANDLE</b>	<b>CRANK HOLDER</b>	<b>OPERATING HANDLES - 36C (TOP) 37C (BOTTOM)</b>		<b>LOCK CATCH</b>	
		SK 2105-07	SK 3105-15 - 37C	SK 3105-18	
					
<b>O/HANDLE SOCKET H/BOLT</b>	<b>37C BAR BOLT</b>	<b>36C LOCKING BAR BOLT</b>	<b>37C LOCK JAW PIVOT</b>	<b>36C LOCK JAW PIVOT</b>	
SK 3221-01		SK 2122-25	SK 2106-67	SK 2121-13	

## HYVA cylinders, PTO's, oil tanks, pumps, valves & components

A full range of HYVA products are now available. Contact us for assistance.

	
<b>PTO's and Adapters</b>	<b>valves</b>
	
<b>air controls</b>	<b>HYVA pumps</b>
	
<b>rear &amp; side mounted oiltanks</b>	<b>power packs, controls &amp; switches</b>



agriculture cylinders

underbody cylinders



Hyva Southern Africa (Pty) Ltd



suction adaptors



All MAXLAMP products are top quality and SABS approved



**MAXLAMP 1**  
RED - Prt No: 10TL004M



**MAXLAMP 1**  
AMB Prt No: 10TL005M



**MAXLAMP 1**  
Clear Prt No: 10TL006M



**MAXLAMP 2**  
Prt No: 10TL005BM



**MAXLAMP 2**  
Red Prt No: 10TL006BM



**MAXLAMP 3 - Dual**  
Rev/Ind - 10TL022M3



**MAXLAMP 3**  
Reverse/Indicator



**MAXLAMP 3 - Dual**  
Prt No: 10TL023M3



**MAXLAMP 3**  
Stop/Tail/Indicator



**MAXLAMP 4**  
10TL024MV3R/Y:

**MAXLAMP**



Stop/Tail/Rev



**MAX Marker Lamps**  
Red - 10ML  
Green - 10ML016  
Amber - 10ML015  
Clear -  
Globe type & L.E.D



**Tail Lamps - Globe type**  
Red - 10TL001C  
Amber - 10TL002C  
Clear - 10TL003C

Replaceable Globe Type - Stop/  
tail lamp & Indicator lamp ass'y,  
Rubber Grommet



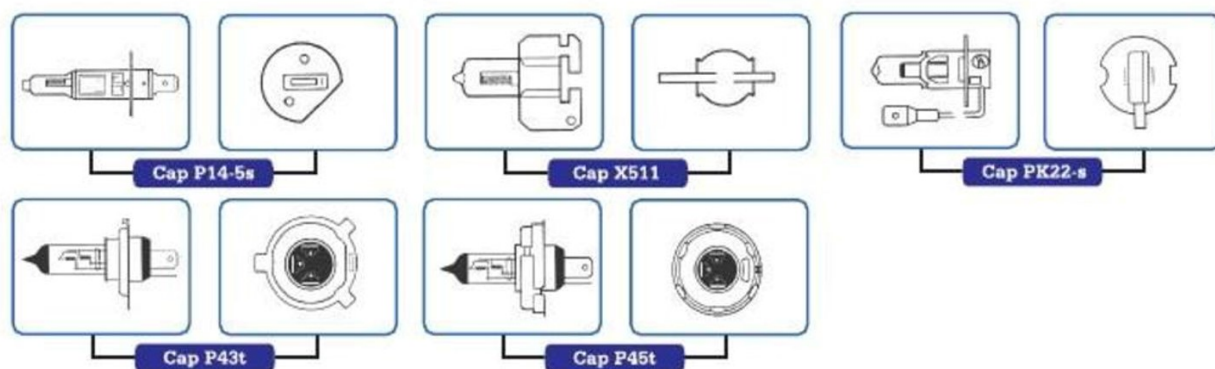
**GLOBES**

- P25-1 Single Pole Single Filament for Stop or Indicator Lamp
  - 24V - 21W
  - 12V - 21W
- P25-2 Double Pole Double Filament for Stop/Tail Lamp
  - 24V-21.5W
- R19/5 Single Pole Single Filament for Tail or Number Plate Lamp
  - 24V-5W & 12V-5W
- T8/4 Single Pole Single Filament for Tail or Number Plate Lamp
  - 24V-5W & 12V-5W

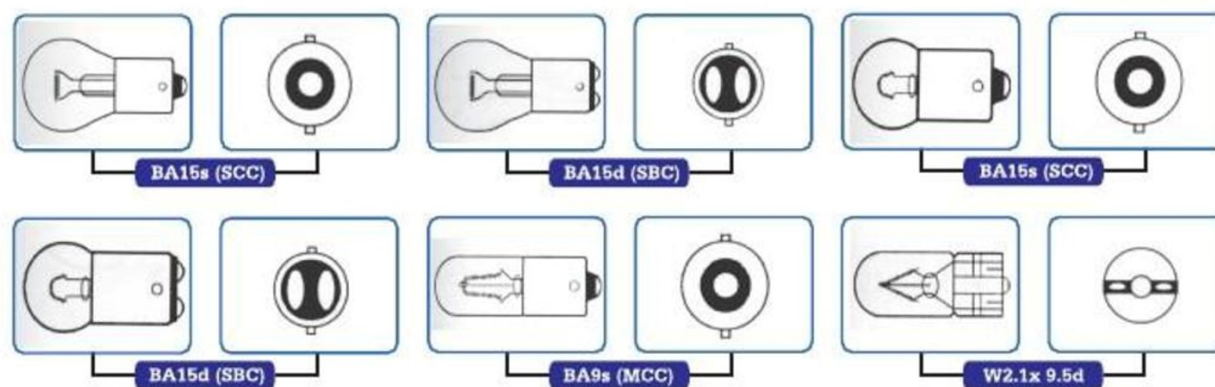




## tungsten halogen headlamps

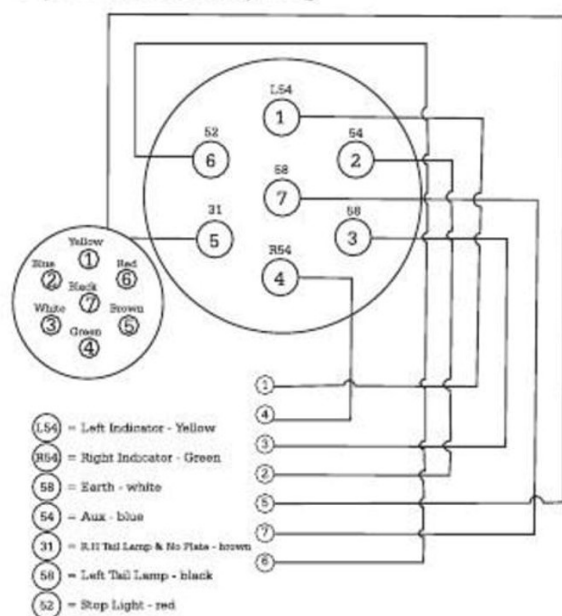


## commercial vehicle bulbs, stop - tail - flasher bulbs

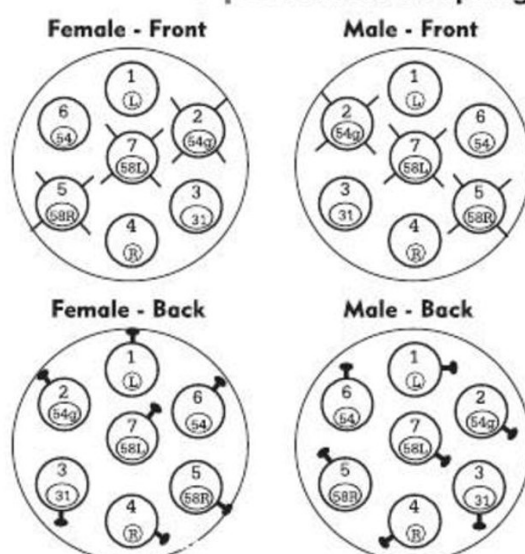


## 7 pin male and female wiring diagrams

### 7 pin male coupling



### 7 pin female coupling



### MARKING

- |                              |  |
|------------------------------|--|
| 1. Yellow (L) Left Indicator | 5. Brown (58R) R.H Tail Lamp + No Plate Lamp |
| 2. Blue (54g) Aux or Caravan | 6. Red (54) Stop Light                       |
| 3. White (31) Earth          | 7. Black (58L) Left Tail Lamp                |
| 4. Green (R) Right Indicator |  |



Numberplate LED

Prt No: 10NP004



Numberplate LED

Prt No: 10TL005 TI15



Interface Box



Terminal Junction Box



7 Core and 5 Core  
7 core - 5 pin plugs  
7 core - 7 pin plugs  
12 N7

Green Mamba

Prt No: 10GM002



Black Mamba

31 coils / 30mm ID

Loom with fittings

Prt No: 10BM003



14 coils  
/ 90mm ID

Black Loom

Prt No: 10GL001



Cabletyre

Prt No: 11CT002/6/7



Reverse Alarm

Prt No: 10BB001/002



Battery Terminals

Prt No: 10BT001+/2-



Metal Flanges

Prt No: 10TL011M



Prt No:  
10TL011F

steel

plastic

Plastic Flanges

Prt No: 10TL011P



Electrical Plug - Steel

Prt No: 10TP001H

5 pin plug (2 pins-3 sockets)  
7 pin plug 12 N7 (4pins - 3 sockets)  
7 pin plug 24 N7 (7 pins)



Electrical Socket Steel

Prt No: 10TS001H

5 pin socket (3 pins- 2 sockets)  
7 pin socket 12 N7  
(3 pins - 4 sockets)  
7 pin socket 24 N7 (7 sockets)



Electrical Plug - Plas

Prt No: 10TP006B



Electrical Socket Plas

Prt No: 10TS005





2 hole lightbox

Prt No: 11LB002P



3 hole lightbox

Prt No: 11LB003



4 hole lightbox

Prt No: 11LB009



lightbox flanges

Prt No: 11LB011



Tailboards - Polyprop

Tailboards - Steel

1.7m 4 Hole Tailboard	Prt No: 11TB001
1.7m 8 Hole Tailboard	Prt No: 11TB010
1.9m 4 Hole Tailboard	Prt No: 11TB002
1.9m 8 Hole Tailboard	Prt No: 11TB011

2.1m 4 Hole Tailboard	Prt No: 11TB003
2.1m 8 Hole Tailboard	Prt No: 11TB007
2.4m 4 Hole Tailboard	Prt No: 11TB006
2.4m 8 Hole Tailboard	Prt No: 11TB004

STEEL OR POLY FINISH



4 HOLE TAILBOARD

AVAILABLE IN:

1.7m | 1.9m | 2.1m | 2.4m



5 HOLE TAILBOARD

AVAILABLE IN:

1.7m | 1.9m | 2.1m | 2.4m



8 HOLE TAILBOARD

AVAILABLE IN:

1.7m | 1.9m | 2.1m | 2.4m

## trailer accessories - STEMCO hubodometers



### Features and Benefits

- Spring loaded counterweight virtually eliminates spin when the tyres hit bumps and potholes, assuring you of greater accuracy.
- Hubodometers are calibrated to perform on over 2500 specific tyre models and sizes to further ensure reliable mileage information.
- The STEMCO hubodometer is an indispensable tool for scheduling maintenance determining lease charges, validating guarantees and calculating cost per kilometer.



Whether for maintenance purposes or logging kilometers, accuracy is critical. So, if your hubodometer does not give you an honest, accurate calculation of kilometers travelled, you're losing money and profits. At STEMCO, we build a drive-less hubodometer guaranteed to deliver mileage accuracy within +/- 2% (based on the life of the tyre). With construction so durable, we back it with a 750 000km warranty.

With more than 1 Million miles of testing, the DataTrac shows unparalleled accuracy.

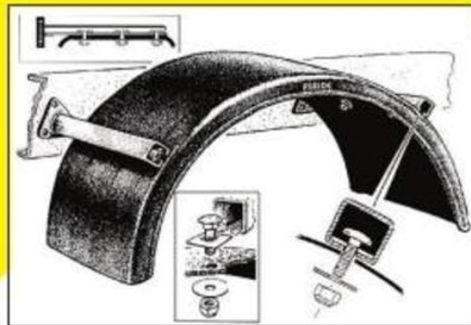
- Large, Easy to read display
- Compact Size simplifies Tyre Service
- Years of Reliable Service with NO MOVING PARTS



### Features and Benefits

- Large, easy to read LCD - makes data retrieval simple and accurate. Optional flexibility of trip and life readings for precise data management and collection.
- Numbers automatically position upright for easy verification of mileage.
- Compact size makes it easy to mount and dismount tyres without removing DataTrac from wheel.
- NO moving parts, provides improved readability and durability for the most demanding vocational applications. Each unit is marked with a unique serial number: providing security and control.
- Long Life Battery allows for 4 year, 500 000 mile warranty.

## trailer accessories - PARLOK toolboxes & mudguards



### Toolboxes

Produced of high quality high density polyethylene (HDPE) plastic. HDPE is recyclable raw material. Modern design. Easy to fit, fixing brackets included.

- Light in weight • High resistance to impact
- High resistance to temperature extremes
- very good chemical resistance
- do not need painting, do not rust
- Lockable

### White Line for Increased Visibility

Parlok Mudguards are suited for installation to trailers, tractor units and rigid vehicles



### Supra Spray Suppression Mudflaps

improves road safety during wet conditions

- Improved visibility to following vehicles
- Improved Rear vision to drivers

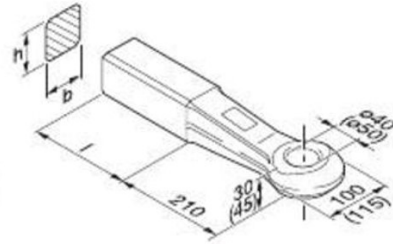
Available in single and dual wheel

**PARLOK**  
MUDGUARDS & TOOLBOXES



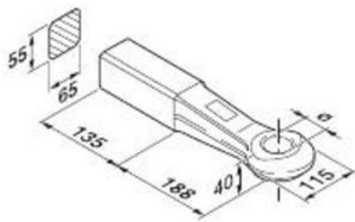
# Towing Eyes

**B** Shape A for welding



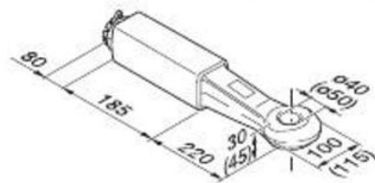
• Technical data

	ø (mm)	h x b (mm)	l (mm)						e1
				D (kN)	Dc (kN)				
57260	40	40 x 40	110	18	18	180	8	4,1	00-0739
57262	40	50 x 40	110	25	25	250	9	4,7	00-0740
57264	40	50 x 50	110	70	50	500	14	5,9	00-0741
57268	40	65 x 55	125	125	66	900	20	7,8	00-0743
57270	40	65 x 60	125	125	74	1000	23	8,2	00-0744
57272	50	65 x 60	170	130	90	1000	30	11,4	00-0625



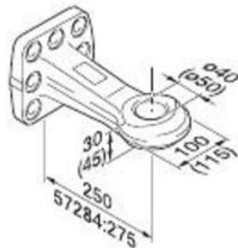
	ø (mm)	D (kN)	Dc (kN)	S (kg) ' V	(kg)	e1 (kg)
57229	40	125	66	900	20,0	8,7
57229	40	168			8,7	

Form B mit Schraubende • Shape B for bolting • Forme B avec extrémité vissée • Forma B con estremità a vite • Forma B con extremo atornillado

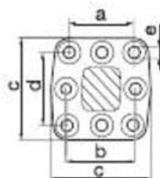


	ø (mm)	D (kN)	Dc (kN)	S (kg) ' (kN)	(kg)	e1
57252	40	125	74	1000	25,0	11,0
57254	50	130	90	1000	25,0	12,6

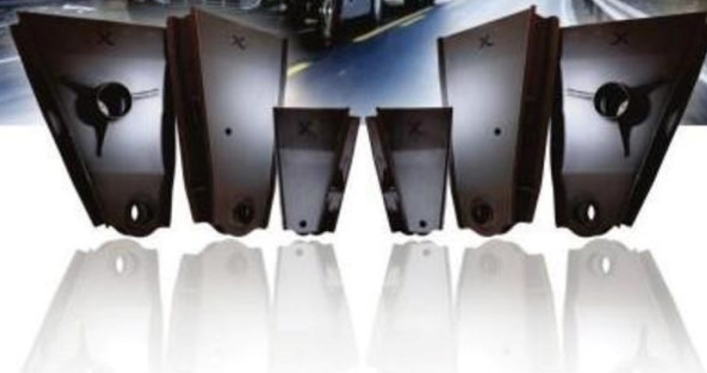
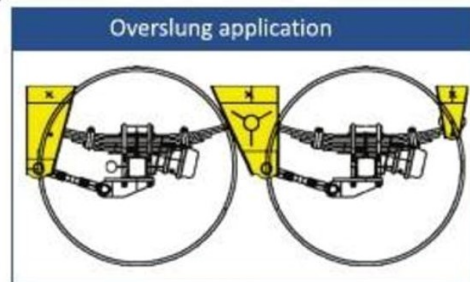
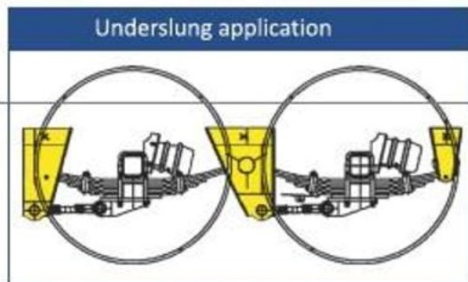
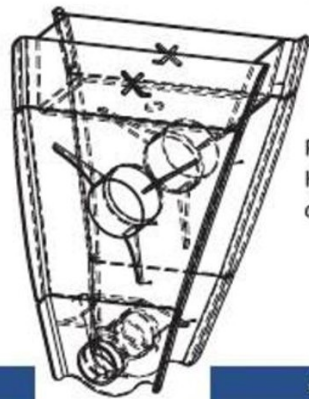
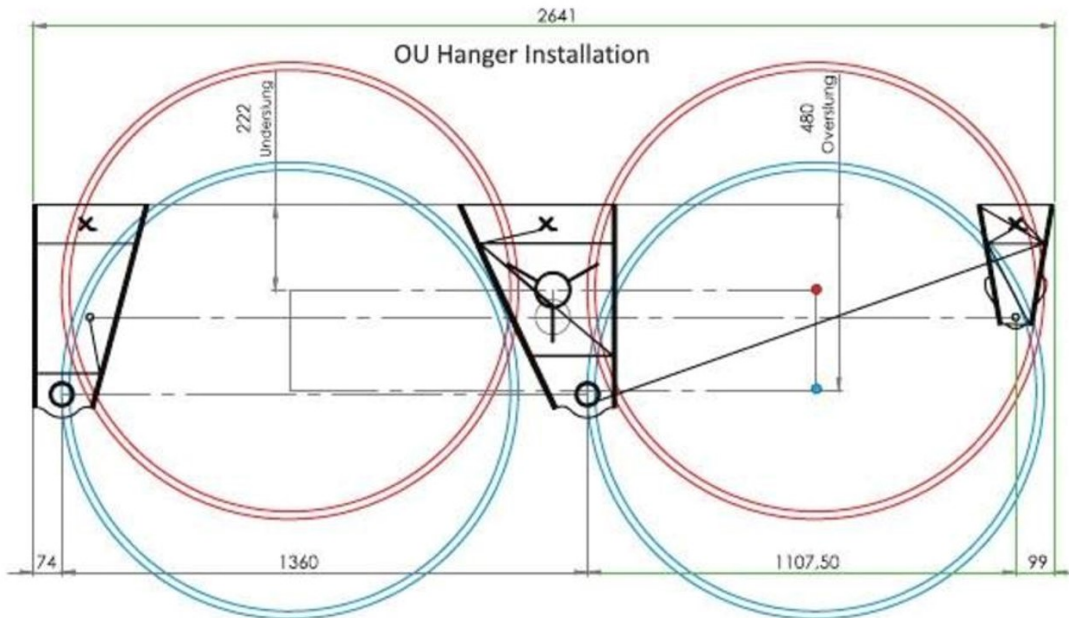
Form C/D mit Flansch • Shape C/D with flange • Forme C/D avec platine • Forma C/D con flangia • Forma C/D con brici



	ø (mm)	D (kN)	Dc (kN)	S (kg) ' (kN)	(kg)	e1
57243	40	130	100	1000	35,8	8,8
57349	40	130	100	1000	35,8	8,8
57244	50	190	135	1000	72,5	9,5
57244	50	190	113	2500	43,2	9,5
57284	50	250	135	1000	90,0	17,9
57284	50	250	113	3000	43,2	17,9

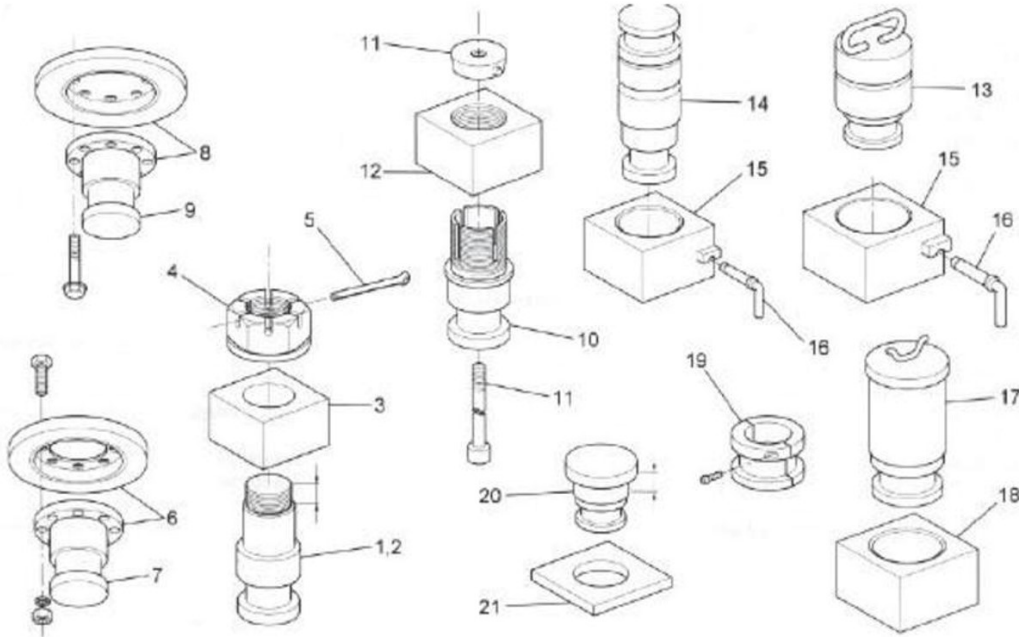


	a (mm)	b (mm)	c (mm)	d (mm)	e (mm)
57243	100±0,5	110±0,5	ca. 154	110±0,5	17,0
57349	100±0,5		ca. 154	110±0,5	17,0
57244	100±0,5	110±0,5	ca. 154	110±0,5	17,0
57284	130±0,3	130±0,3	190+4	130±0,3	21,0





# KING PINS and block & Combos



**1. Std 50mm Bolt in King Pin**

Thread length 48mm  
Thread length 33mm

**2. 90mm King Pin to suit**

500mm block -  
NB: Temporary use only

**3. Std 50mm King Pin Block -**

For item 1 & 2  
6mm thk Rubbing plate  
8mm thk Rubbing plate  
10mm thk Rubbing plate

**4. Std King Pin Nut for**

Item 1 & 2 above -  
for 48mm thread length  
For 33mm thread length

**5. Split pin 8 x 140**

**6. 50mm King Pin**

Underside renewable -  
Complete assembly -  
For 6 & 8mm Rubbing plate

For 10 & 12mm Rubbing plate

**7. 50mm King Pin item 6**

**8. 50mm King Pin**

Underside Renewable -  
Complete assembly -  
For 8mm Rubbing plate  
For 10mm Rubbing plate

**9. 50mm King Pin for Item 8**

**10. 50mm King Pin**

underside renewable -  
Complete assembly -  
items 10 & 11  
King Pin only item 10

**11. Taper lock & bolt**

**12. 50mm King Pin Block -**

For item 10 above

**13. Drop in King Pin c/w**

handle -  
50mm King Pin  
90mm King Pin

**14. Drop in Double Ended -**

50mm & 90mm King Pin

**15. King Pin Block -**

For items 13 & 14 above

**16. Locking Pin for King Pin Block -**

For item 15 above

**17. Drop in King Pin c/w**

Handle -  
50mm King Pin  
90mm King Pin

**18. King Pin Block -**

For items 17 above

**19. Conversion Split Collar -**

50mm to 90mm c/w  
Socket hd capscrews

**20. 90mm King for Dolly -**

Shank length 35mm  
Shank length 37mm

**21. 90mm King Pin Plate -**

For item 22 above

## KING PIN Combinations



**NEW!!**

Patented design

- Brand new design
- latest technology
- all material SABS appr.
- Block - En8 / Kingpin En19T
- NO MORE Split pin & nut
- NO NEED to heat block anymore... simply insert and weld

**kingpin combo**  
tomorrow's technology..today

Prt no: 14KN005



**tapered kingpin**  
complete with block & nut

## Couplings



## Camshaft components

<b>01CB020</b>  HEN Propar 160 series/Meritor (ROR)	<b>01CB018</b>  HEN P, PS, PSL	<b>01CB017</b>  spherical cam bracket assembly	<b>01CB014</b>  ROR TM, TE	<b>01CB015</b>  ROR TM, TE
<b>01CB009</b>  HEN Propar, Hend'son 160 series/Meritor (ROR), TM	<b>01CB006</b>  HEN P, PS, PSL	<b>01CB024</b>  Hendrickson 160, 2000 Meritor, (ROR), TM	 BPW H series	
 BPW NR series	<b>01CB010 - 42mm</b>  Meritor (ROR) TM	<b>01CB009 - 38mm</b>  Meritor (ROR) TM	 Meritor (ROR) TE, LM	 Meritor (ROR) TE, LM

## brake shoes and brake linings

we carry a full range of quality industry approved brake linings. All popular linings & brake shoes for:

- 4515 • MP 31 • MP 32 • MP 36
- ZA 445 • GG 83



### BRAKE SHOE fittings

 <b>BPW</b> Cam Roller Retainer	 <b>BPW</b> Cam Roller Retainer	 <b>BPW</b>	<b>01RR001</b>  <b>HEN</b> New style with Pin	<b>01RR001I</b>  <b>Meritor (ROR)</b>
 <b>Meritor (ROR)</b> Retainer	 <b>BPW</b>	 <b>BPW</b>	 <b>HEN</b>	<b>01SP001</b>  <b>HEN/Meritor (ROR)</b>



## Popular Wheel Studs & Nuts



## WHEEL cones



## wheel nut torque indicators



## Axle nuts & accessories

